



GA State  
Firefighters  
Association  
770-914-7774

# THE HOSE LINE



A Publication Of Georgia State Firefighters Association  
Designed For Our Exhibitor Community

JULY 2009

VOLUME 1, ISSUE 2

Welcome to the GSFA edition of 'THE HOSE LINE', a quarterly newsletter specifically for our exhibitor community, published by the Georgia State Firefighters Association. This newsletter is designed to keep you up-to-date on what is happening in the Georgia Fire Service, with your Association, and the Joint Conference.

**Rural Fire Equipment Show** --The Georgia Forestry Commission can no longer be involved with the planning or preparations in any way for the Fire Equipment Show, due to budget cuts, plus no manpower can be expended on this effort at all. This is definitely a blow to our planning efforts, since the GFC has handled this so successfully for years, however, we do understand only too well about budget shortfalls, and we will persevere and continue our preparations for sponsoring this Show. Plans were to hold the Show in 2009, but with the GFC dropping out, and the downturn in the economy affecting so many budgets, this will have to be done in 2010 now. The RFD/Fire Service Equipment Show Committee will be meeting soon to start the planning process and to set the date for the Show so that people can get it on their calendars. We are looking at either April or May 2010, but this could change as planning progresses, especially since we do not even have the location/facility locked down yet. If you would be interested in serving on this planning committee, or have any ideas or suggestions that might help us in our planning efforts, let us know (770-914-7774). I just wanted to make sure that the fire service knows that the Show is not going to fall by the wayside. And we are going to try to make it bigger and better for you. Watch our website for updates about the Fire Equipment Show. If you are a vendor and would be interested in having input on the set up and planning of the Show, give Georgia Ann a call at 770-914-7774.

**GSFA Travel Website -**

PLANES, TRAINS, OR AUTOMOBILE,  
BY SEA OR BY AIR.....NO MATTER WHERE  
YOU GO OR HOW YOU PLAN TO

GET THERE! When you start making travel plans, THINK GSFA! VISIT OUR WEBSITE:

[WWW.GSFFA.ORG](http://WWW.GSFFA.ORG)

**THINK  
GSFA**



Visit the GSFA website to get the best deals on travel – whether that travel is for business, a family vacation abroad or right here in the good old USA. A cruise to an exotic seaport, a cross country tour by train, or maybe that hunting trip you and Dad have been putting off. Just enjoying that much needed weekend get-a-way, or seeing the countryside by automobile. How about a trip back to the old home place, for a trip down memory lane? Whatever the occasion, you can get information and make all of the arrangements through the GSFA website. At our website you can find the same deals as you would at other travel sites, such as Travelocity or

# THE HOSE LINE

Expedia. Even if your Vacation of choice is to stay at home and take in a movie, or a concert or sports event, those tickets can be purchased at the GSFA website. When users book events through the GSFA website, the Association will receive 40 percent of the commissions paid on all bookings. So while you browse and plan, you will be helping GSFA. The next time you get ready to browse the Internet in search of travel plans or destinations, for whatever the reason, think GSFA!

**2009 JOINT CONFERENCE UPDATE** --The Joint Conference of the Georgia State Firefighters Association and Georgia Association of Fire Chiefs will be held in Athens, Georgia, on August 5 – 8, 2009. The conference will be hosted by the Athens/Clarke County Fire Department. Meetings and **exhibits will be held at the Classic Center**. Several different hotels will be utilized for the conference, and you will find a listing of these in this issue. Wednesday will be registration day, with golf and bowling outings, and the conference will officially convene on Thursday morning with the Memorial Service and opening ceremonies, followed by the training classes interspersed with business sessions of both Associations, over the next two days. ALL meetings will be at the Classic Center.

## CONFERENCE HOTELS:

### Hilton Garden Inn

390 East Washington Street  
Athens, GA 30601  
706-354-6431  
Conference Rate: \$119 (+14% tax)

#### Overflow Hotels:

### Holiday Inn

197 East Broad Street  
Athens, GA 30603  
706-549-4433  
Conference Rate: \$85.00 (+ 14% tax)

### Holiday Inn Express

513 W. Broad Street  
Athens, GA 30601  
706-548-1111  
Conference Rate: \$89 (+ 14% tax)

There are also condos available (1, 2, and 3 BR):

**Game Day Luxury Suites**, 250 W. Broad Street, Athens, GA 30601  
706-583-4500/www.stayatgameday.com  
1-BR - \$119; \$99 If a minimum of 3-day stay  
2-BR-\$139; 3-BR - \$159

All of these hotels are within walking distance of the Classic Center. Make reservations directly with the hotel of your choice.

## **2009 JOINT CONFERENCE EXHIBIT INFORMATION -**

The Conference is being hosted by the Athens/Clarke County Fire Department. Your company is invited to exhibit your product(s) at the Joint Conference. If your company desires to attend and exhibit, complete and return the attached form, "**Request For Exhibit Space**", **before June 15, 2009**. Exhibit forms can also be downloaded from our website ([www.gsffa.org](http://www.gsffa.org)). Exhibit requests will be accepted by the GSFA Office through July 10, 2009. All exhibit request forms are to be returned to the Georgia State Firefighters' Association, Attn: Georgia Ann Smith, @ 50 Lincoln Road, McDonough, GA 30253. All exhibitors must pay the sustaining membership/exhibit fee of \$875.00 in order to exhibit at the Conference. All exhibits, both booths and apparatus display, will be inside the Classic Center. The \$875.00 Standard Exhibit Fee covers a 10 x 10 booth area, which consists of two 6' or 8' tables (whichever is available) two chairs and a waste basket; or one table and an apparatus. There will be no pipe and draping for exhibit booths. Also included in this fee is the conference registration fee which covers admittance to all conference functions (excluding the banquet) **for one of your** company's representatives, and a copy of the GSFA Fire Department Statistical Directory that is published annually by the GSFA. Tickets for the annual banquet on Saturday evening can be purchased for \$35.00 per ticket. If you want electricity at the booth, it will \$50.00 extra. Electricity will be available at your booth ONLY if requested and paid for. Please note on the exhibit request form whether your exhibit is for 2 tables, or for 1 table, 1 apparatus. If request is for apparatus display note the type and length of apparatus.

# THE HOSE LINE

---

The number of trucks this year has to be limited since they will be inside the Center, so it will be on a first come, first served basis. We anticipate that approximately 10-12 trucks will fit into the Center comfortably. Also, no extra apparatus will be allowed. Extra tables can be purchased for \$100.00 per table. (The Center is charging us extra per table in the exhibit hall). GSFA does accept credit cards for payment of conference fees (visa, master card and discover). **WE DO NOT ACCEPT AMERICAN EXPRESS.** All conference fees can be charged to your credit card. This year you will be assigned a booth number (arranged by electrical requests, etc.) when your confirmation is mailed to you. You can send in your exhibit request, and follow up with a check for the fees before the deadline. Any requests over and above those covered under the Exhibit/Sustaining Membership Fee will be at an extra charge as outlined. An example of what your exhibit fees would be if you took advantage of everything:

Exhibit Fee	\$875.00
Electricity	\$ 50.00
Extra Table	\$100.00
Banquet Ticket	\$ 35.00

Exhibits can be set up beginning at 8:30 a.m. on Wednesday, August 5<sup>th</sup>. The exhibit hall will officially open for 'browsing' at 1:00 p.m., while firefighters are registering. It is up to you if you want to have the booth manned during this time. We will have refreshments available for you in the exhibit hall as you are loading in. Exhibits will remain set up through Saturday at noon, although most people are already out by then. If you need to leave earlier, that is acceptable. Please mark on the exhibit form if you have an oversize display for your booth area. An Association official will be handling exhibit set-up, and will try to accommodate any requests that he possibly can. If you have oversize apparatus (aerial, etc.) you may need to contact the Classic Center re: height restrictions. If you should have special equipment/products that you may need to ship to the Classic Center prior to the Conference please call them directly at 706-208-0900 regarding any restrictions on such shipments (delivery or storage). Note: If you are sponsoring a function for the host department, this is separate and does not grant admittance to the exhibit hall. You still must pay the sustaining membership fee to the Association if you want to exhibit.

1. You can pick up your exhibit/registration information in the exhibit hall on registration day (Wednesday), starting at 8:30 a.m. Exhibitors are already pre-registered so it is not necessary for you to stand in line at the conference registration desk. A Board official will be in the exhibit hall to assist you throughout the Conference. Your exhibit package will contain name badges and ribbons for representatives that were listed on the exhibit form, and a conference agenda. A copy of the Fire Statistics/Fire Department Directory will be available for pick-up at the registration desk in the exhibit hall (it is too big to fit in the exhibit package). Please ask the Association Official for a copy if it is not offered to you when you get your package. **One representative designated by your company will go to the Photo Booth to have his/her PHOTO ID BADGE made.** This ID badge will admit the representative to all conference functions (with the exception of the annual banquet).
2. There is no charge if you have more than one person working your booth. There is only a charge for extra people if they want to attend any of the socials. Tickets for individual socials can be purchased at the registration desk, or paid for in advance when you submit your exhibit request form.

## PARTICIPATION IN SPECIAL EVENTS

If you want to participate in the Golf or Bowling outing on Wednesday, you must pre-register. The fee for golf is \$60 pp; and bowling is \$30 pp. Please visit our website and download the conference registration form if you want to golf or bowl. Please make sure that whoever is handling your exhibit registration sends this registration

# THE HOSE LINE

form along with the exhibit fees because there will be no registration for special events at the conference. Please note: A confirmation of your exhibit request will be mailed to the address ( OR email address) listed on your exhibit form. You should check to make sure your exhibit request was sent in, especially if it is handled by the home office. If your exhibit request must go through a home office, be sure they receive this information packet intact. *If you need additional copies please call us at 770-914-7774. Exhibitor Late registrations are permitted and will be accepted until July 10, 2009. The exhibit fee for late registrations is \$925.00. Return all exhibit information to:*



Georgia State Firefighters Association  
50 Lincoln Road, McDonough, GA 30253  
Attn: Georgia Ann Smith



## 2009 JOINT CONFERENCE

### EXHIBIT REQUEST APPLICATION

Georgia State Firefighters Association &  
Georgia Association of Fire Chiefs  
Athens, Georgia – August 4 – 8, 2009



Company Name \_\_\_\_\_

Address \_\_\_\_\_

City \_\_\_\_\_ State \_\_\_\_\_ Zip \_\_\_\_\_ - \_\_\_\_\_

Telephone \_\_\_\_\_ email \_\_\_\_\_ @ \_\_\_\_\_

Website \_\_\_\_\_ Fax \_\_\_\_\_

Contact \_\_\_\_\_

Names of Company Representatives Attending (for name badges):

1. \_\_\_\_\_
2. \_\_\_\_\_
3. \_\_\_\_\_
4. \_\_\_\_\_

Identify Representative Who Will Have the **Photo/ID Badge**:

A confirmation of your exhibit request will be mailed/e-mailed to you by the GSFA Office. Return Form with appropriate fees to:

Georgia State Firefighters Association  
50 Lincoln Road, McDonough, Georgia 30253  
Attention: Georgia Ann Smith, Chief Executive Officer

**NOTE: PLEASE COMPLETE THIS FORM IN ITS ENTIRETY.**

# THE HOSE LINE

(Forward appropriate special event fees along with exhibit fee. Advance registration is required for all special events).

Golf Event - \$60.00 ( ) Bowling Event - \$30.00 ( )

## EXHIBIT SPACE REQUESTS

Are you a new exhibitor? \$875.00 -- Standard exhibit fee (sustaining membership fee) covers:

1 table, 1 apparatus, or 2 tables. Electricity is extra.

Everyone will mark **Section A**, and then mark **any additional requests** in Section B (at extra cost). **Be sure to mark all those applicable to your exhibit.** Deadline for advance registration is June 15, 2009. Late Registrations will be accepted until July 10<sup>th</sup> (Late fee is \$925.00.) No requests accepted after July 10<sup>th</sup>. Booth dimensions are approx. 10 x 10, with 2 - 6' or 8' tables, two chairs and a waste basket. No pipe/draping. No EXTRA apparatus allowed this year since exhibits are all inside the Classic Center.

<p><b>A. STANDARD EXHIBIT - \$875.00 covers:</b></p> <p style="text-align: center;">(Mark One)</p> <p>1. Two (2) Tables ( ) OR</p> <p>2. One (1) Table, One (1) Apparatus ( )</p> <p>Type of Apparatus: _____ Length of Apparatus: _____</p>	<p><b>B. ADDITIONAL REQUESTS:</b></p> <p>1. Electricity - \$50.00 ( )</p> <p>2. Extra Table - \$100.00 ( )</p> <p><b>Note: No <u>extra</u> apparatus can be purchased this year because of space limitations.</b></p>
--	---

METHOD OF PAYMENT: Check ( ) Purchase Order ( ) (Monies due by July 10th) Credit Card ( )

Card Number \_\_\_\_\_ / \_\_\_\_\_ / \_\_\_\_\_

Expiration Date: \_\_\_\_\_ Name on Card \_\_\_\_\_

Type of Card: Master Card ( ) Visa ( ) Discover ( )

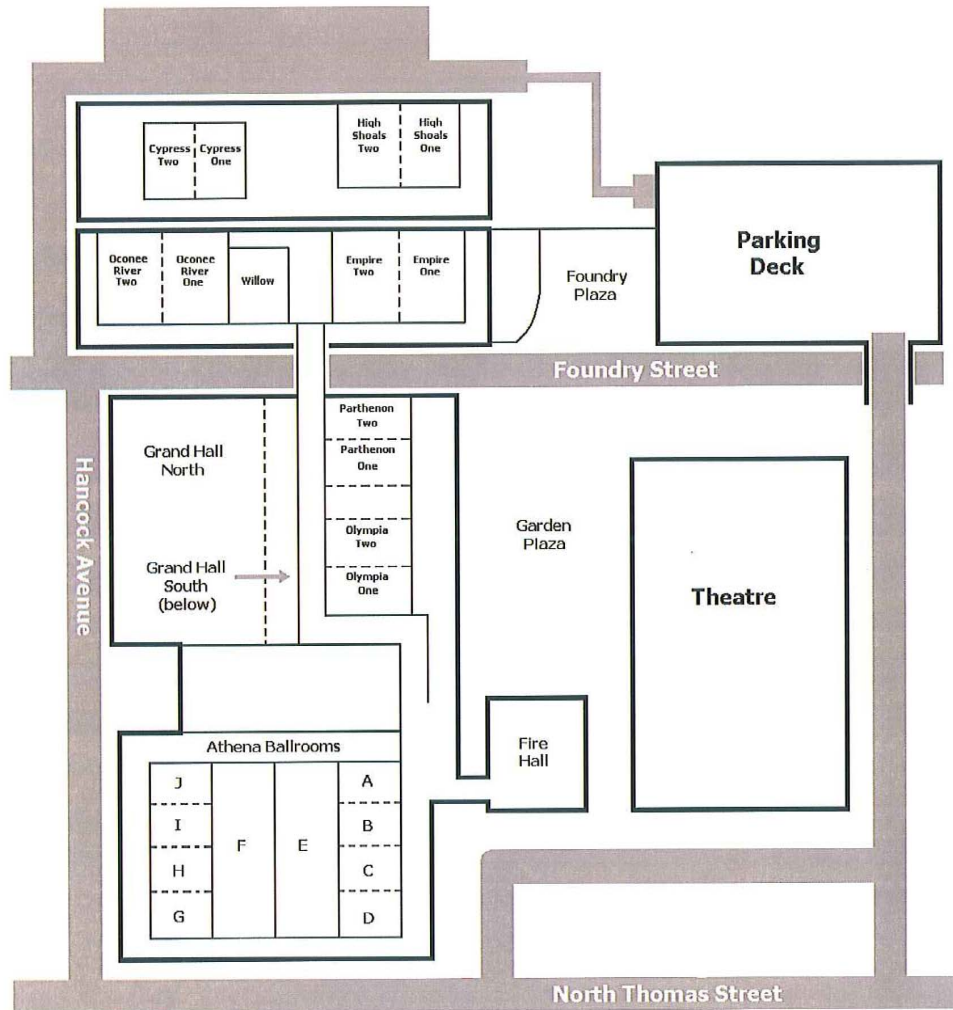
Please note: We do not accept American Express

### Total Fees Submitted:

Exhibit Fee Paid	Golf/Bowling Fee	Extra Requests	Total Fees Submitted
\$875.00 ( ) Late \$925.00 ( )	Golf - \$60.00 ( ) Bowling - \$30.00 ( )	\$	\$
• <i>*\$925.00 if after June 15<sup>th</sup>.</i>		\$	\$

# THE HOSE LINE

## THE CLASSIC CENTER



## FACILITY LAYOUT

# THE HOSE LINE

---

## Conference Particulars:

- Exhibits will be set up downstairs in the Grand Hall at the Classic Center. Both apparatus and booth set-up will be inside the Hall. Coffee breaks will be set up in the exhibit hall. The Welcome Reception on Wednesday evening will be held outside in the foyer of the Grand Hall. This hopefully will insure a continuous flow of traffic throughout the exhibit hall. Vendors will also be recognized and given their plaques that night. Training classes will also be held in the Grand Hall (in the front portion). Firefighters will have to go into the exhibit hall to get to the classroom.
- Load in for vendors starts on Wednesday (August 5) at 8:30 a.m. - 5:00 p.m. The firefighter registration will start at 11:00 a.m.; the purpose for opening the exhibit hall early is to allow vendors to get set up and have their booths ready when the firefighters start browsing. A full schedule/program will be included in your registration packet at the conference. Refreshments will be provided in the exhibit hall as vendors are bringing in their products/equipment (sodas, water and cookies/brownies). I may add coffee to the menu for the morning hours; I know it will be hot in Athens, and a cool drink will be refreshing; but after you're settled in, a cup of coffee might be good!

## Tentative Schedule of events:

- The exhibit hall will open (and this is all tentative right now, hope to tie this down *soon*) at 8:30 a.m. on Thursday morning, and will remain open until 5:00 p.m. Same schedule for Friday morning, and 8:30 until 12:00 on Saturday, although as you know, most people leave out on Friday evening and the exhibit hall is a ghost town by Saturday morning.
- Luncheons will be set up upstairs outside the meeting hall, and firefighters will return to the meeting room to eat while class continues. Vendors can take their food back to the vendor hall to eat. With the promotion of the classes for credit, working luncheons provide the opportunity for extra credits, so that kinda cuts into networking at the luncheons. Don't know an alternative to that without eliminating firefighter's credit hours. Coffee breaks will be set up in the exhibit hall - even the sponsored ones. Hopefully, this will be a draw for firefighters to browse in the exhibit hall. We are also planning to have a drawing for two or three big ticket items in the exhibit hall on Friday. Vendors will be given a batch of tickets, and they will give a ticket to any firefighters who visit their booth and *actually talk* with them. These will be dropped in the 'drawing/raffle box' located somewhere in the exhibit hall. There is a continental breakfast (biscuits, etc) each morning, and it will be set up inside the exhibit hall - although tables will be set up outside in the foyer. But they still have to go inside to get their food. We are providing biscuits instead of a 'full' breakfast with the thought that they might pick up a biscuit and a cup of coffee and keep 'browsing'. Here's hoping...
- Thursday evening is free of activity. Some vendors use this free time to take their clients out to eat.
- Friday evening is the Firefighters Competition and meal. This year it will be held at Sandy Creek Park in Athens.

If you have any questions concerning the Joint Conference, please call the GSFA Office at 770-914-7774; or email me at [gsmith3809@aol.com](mailto:gsmith3809@aol.com).