



MODEL: *B4512-18SF*

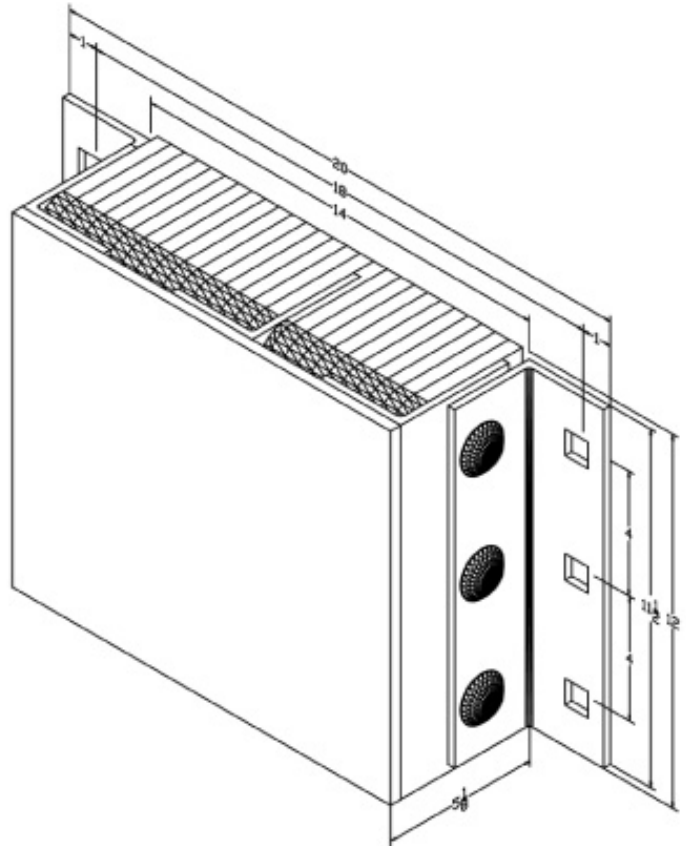
Size

Projection 5-1/8"
Height 12"

Length:

-Overall 20"
-Anchor Holes 18"
-Rubber 14"
Angle Size (2) 1/4"x3"x3"x11-1/2"
Slot Angle Size (3) 1/4"x3"x4"x12"
Face Plate Size (1) 3/8"x12"x14"

Bolt Heads Are Inscribed
"DURABLE CORP"



All measurements are +/- 1/8"