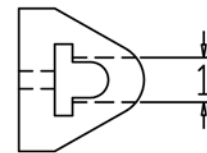


MODEL: *D-2*
EXTRUDED BUMPER

Size

Overall Length	up to 10'
Overall Thickness	1-5/8"
Height	2"
Bolt Size	1/4 x 2"
Total Weight	1.4 lbs/ft



SIDE VIEW

Please Note:

-Weights are calculated and are not actual and overall tolerance may vary + or - 1/4.