



To Whom It May Concern,

MRI Depot is proud to offer you the following GE Profile MRI's & MRI centers for sale. We are working directly with the seller on all centers and systems:

1. Imaging Center for Sale in Tampa

- Located in a phenomenal location, this center maintains good relationships with referral sources in the area and enjoys very little competition from surrounding imaging centers.
- This is a turnkey operation with full time personnel in place that will stay on with the new facility owner. Ideal for someone just entering into the business or for a seasoned professional looking to add on to their existing imaging centers.
- Approximately 1,960 s.f.

Imaging modalities include:

- Hitachi Airis II 0.35T Open MRI
- Norland XR-36 Bone Densitometer
- X-Ray System / Raytheon RME 325R Generator
- Radlink Digital X-Ray Machine
- Picker X-Ray Film Reader
- Kodak Dryview 8700 Multi Imager

Further details about this center and pictures are available upon request.

2. GE Signa Profile III 0.2T in Mobile Trailer

- Original year of Manufacture: 1998
- System Configuration: Mobile unit being utilized as fixed
- Ellis and Watts (DOM 1998)
- Type of Magnet: Permanent
- Average # of Patients: 75
- Current Software Level: 7.67
- Computer Type: SUN
- Type of Archiving: MOD
- Fast Spin Echo
- Fast Grass
- IVI
- Fast Recovery FSS Image Filter
- Under Service Contract

Coils Include:

- Head,
- Extremity,
- 6" Flex,
- 11" Flex,
- Body Flex II (L),
- Body Flex II (XL),





3. GE Profile I - Whole Body 0.2T Permanent Open MRI for Sale

8920 Gradients.

Standard cardiac gating, ECG/peripheral, respiratory gating.

Pulse sequences: SE, IR 2D/3D GRE and SPGR, Angiography: 2D/3D TOF, 2D/3D phase contrast; 2D/3D FSE, 2D/3D FRFSE, FGRE and FSPGR, SSFP, FLAIR, EPI, optional: 2D/3D Fiesta, fat/water separation, T1 FLAIR.

Imaging Modes: Localizer, single slice, multislice, volume, fast, POMP, multi slab, cine, slice and frequency zip, extended dynamic range, tailored RF

Simultaneous scan and reconstruction; 80 images/second reconstruction

15 mT/m

System professionally deinstalled and available for immediate purchase.





4. Mobile Hitachi MRP 7000 Open MRI w/ Lunar DPX Bone Densitometer Housed in the Front End of the Trailer

- Western Mobile Systems Trailer
- 0.3 Tesla
- Permanent magnet with large rectangular opening and short gantry length
- Self shielded
- 32 bit multitasking CPU
- High resolution display (512 x 512)
- Gradient system table
- 8 mT/m gradient amplitude <700 ms slew rate
- 7.0 software
- Two speed power-driven longitudinal movement
- Table weight limit of 500 lbs
- Documentation and books
- Phantoms

Coils Include:

- Pediatric
- Head
- Wrist
- Neck & Shoulder
- Large extremity

***** INCLUDED**

BONE DENSITOMETER - GE/LUNAR DPX-MP WITH 6 FOOT TABLE





5. GE Vectra 0.5T MRI and/or E&W Modular Building

General Specifications:

- Date of manufacture: 1996
- 0.5 Tesla
- Fixed Site – housed in a 12' x 60' modular building

Coils include:

- Knee;
- Head;
- Neck;
- Body;
- 3 inch coil;
- Small flex;
- Large flex;
- Shoulder;

System Information:

- All Manuals Included
- Laser Camera included
- System currently installed and operational
- Available with or without modular building
- System currently under service contract





6. GE 1.5T Twinspeed MRI – Fixed Site

- Field Strength: 1.5T
- Package Name: Twinspeed SR80/SR150
- Gradient Type: 8915
- Resonance Module: TRM
- Table Limit: 31750
- Line Frequency: 60Hz
- RF Amp. Type: 1.5T Analogic SSRF
- Governing Body: FDA 2
- Receiver (Khz); UCER 1/4CH 125 125 125 125
- ISO Vector Z: 8981 CX/LLC Magnet
- Magnet Enclosure: Wide Open (Tight Fit)
- PACS Type: PAC2

SLEW RATE (Twin Speed SR80/SR150)

SOFTWARE LEVEL 9.1.0723d

GRADIENT (Type: 8915)

COILS (Multiple)

CHANNEL (4/8)

HELIUM LEVEL (80.9%)

BOIL-OFF RATE (LCC Low Cryo Consumption)

REAL DATE OF MANUFACTURE (September/2001)

DOES IT HAVE DIFFUSION (Yes)

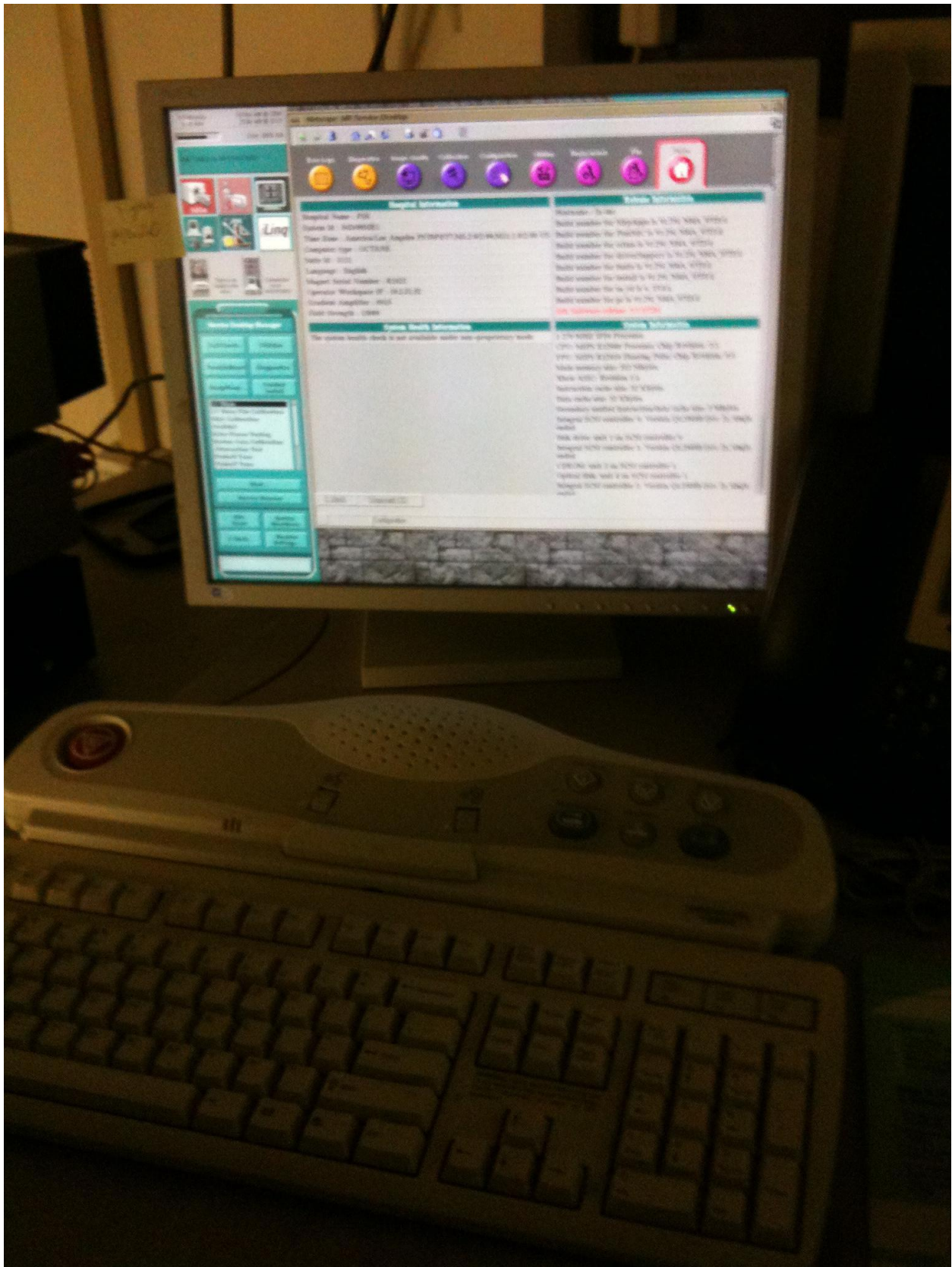
HOW MANY CHANNEL UNIT (4/8)

COLD HEAD&COMPRESSOR DETAILS

- Helium Compressor
- Make:Model: Sumitomo; CSW-71
- Absorber reconditioned: 6/23/2010 @ 76,251 hrs
- Hours: 80186.8 hrs
- Cold Head
- Make:Model: Sumitomo; RDK-408 (A2)
- Hours: 3936 hrs
- Rebuilt: 6/23/2010







7. 2001 Toshiba Opart Open MRI

0.35 Tesla

Cold head replaced less than six months ago

10 mT/m Gradients. 20 Slew Rate. 4 RF Amplifiers. 4.20 R621 Software revision w/ Risc/Unix Computer.

Coils include:

Quad Head (Ph Array), Knee, spine, LG Body, Sm Body, Shoulder, Neck, Flex Elbow.

Includes all monitors. Chiller may be negotiated separately.

System in excellent operating condition with normal wear and tear. Has been under OEM service and will be until the time of deinstallation.

Available in March.

Kodak Dryview Laser Camera included with purchase.





8. Esoate C-Scan MRI

System features:

Gradient strength: 10mT/m

Slew rate: 40 mT/m/ms

Software version: 9.6B

- Maintenance-free open permanent magnet
- 0.2 Tesla field
- No RF Shielding required
- Very compact, installation space of 9 m² required
- Low Power Consumption: only 1 Kw in normal 220/110V power outlet
- Ergonomic design for maximum patient comfort (no claustrophobia)
- Complete set of dedicated optimized coils
- All imaging sequences used in MSK settings
- Full set of pre-defined sequences and protocols
- User defined sequences and customized examination protocols
- Multi planar scout
- Windows based user interface
- Extensive image viewing, analysis and elaboration tools
- Sophisticated storage functionality particularly useful for systems connected to PACS network
- Full DICOM connectivity

Coils Include:

Knee

LG Knee

Hand/Wrist/Elbow Coil

Knee DPA (DUAL PHASED ARRAY) This is an additional coil

Ankle DPA - This is an additional coil

Hand/Wrist DPA - This is an additional coil





9. 2003 Philips Intera 3.0T MRI

The Intera 3.0T represents the standard for short-bore, compact ultra-high-field MRI. The Intera 3.0T MRI has been upgraded to the FreeWave digital data acquisition platform which gives access to our latest, most innovative applications. A complete range of advanced sequences and applications are provided for optimal speed, image quality and interactivity essential for successful high field imaging. The Diamond Select Intera 3.0T MRI core configuration includes the following:

- Base Intera 3.0T MRI system (8 channel)
- Extended MRI Workspace Plus
- Quadrature Body Coil (integrated)
- Quadrature Head Coil
- Accessory set Mobitrack

(1) GYROSCAN INTERA MASTER
GRADIENT SYSTEM, 30 mT/M

(1) DIGITAL RF SYSTEM: ADVANCES
DIGITAL SPECTROMETER

(1) RF POWER AMPLIFIER

(1) SYNERGY PLATFORM

GYROSCAN INTERA RF COILS
BODY COIL w/SENSE TECHNOLOGY
HOST COMPUTER w/64bit RISC processor,
512MB int. memory, (2) 9GB disks
RAPIDVIEW RECONSTRUCTOR, w/standard
256mb

IMAGE STORAGE, 18Gbyte data disk
OPERATOR'S CONSOLE, 20.1IN hi-res LCD color display, 2-way intercom, trolley cabinet, auxiliary electronics cabinet

PATIENT ENVIRONMENT, wide patient opening, adjust. fresh air supply, in-bore microphone, hand-held nurse call button, etc.

PNEUMATIC HEADSET w/2-way
communication

PATIENT SUPPORT
PHYSIOLOGICAL SYNCHRONIZATION
COMPREHENSIVE CLINICAL IMAGING R8
ADVANCED TSE
ADVANCED EPI
ADVANCED GRASE
PROSET

COMPREHENSIVE NEURO IMAGING
DIFFUSION IMAGING AND
CALCULATION
PERFUSION IMAGING
BOLD IMAGING
PRESTO IMAGING
BOLUSTRAK

COMPREHENSIVE SPECTROSCOPY
PROTON SPECTROSCOPY
PICTURE PLUS
PATIENT OBSERVATION CAMERA
PATIENT OBSERVATION MONITOR
VCR VIDEO INTERFACE

INTERFACE WITH RIS SYSTEM
VECTORCARDIOGRAM

FREEWAVE R2 UPGRADE FOR R11 with:
FREEWAVE DIGITAL RF SYSTEM
23 inch WIDESCREEN LCD MONITOR
SENSE X 8 IMAGE ACCELERATION

VIEW FORUM TO EXTEND MR WORKSPACE

SENSE CARDIAC COIL 3T
SENSE SHOULDER COIL 3.0T
SENSE WRIST COIL 3.0T



****Information is shown as provided to MRI Depot, Inc. directly by the seller.

***All systems are subject to prior sale.

**All information should be verified during a third party or in person inspection.

*Financing assistance available for US buyers.

Please don't hesitate to contact me, should you have any questions whatsoever.

Sincerely,

Mark Henderson

Vice President

www.MRIDepot.com

Interested buyers, please contact Mark Henderson at (407) 462-9391 or via skype, user id: mark_henderson74.

For assistance in Spanish, please call Diana de Leon/Executive Assistant to VP at +1 (321) 221-0191.