

THE PIKEMAN'S MARCH

march

trad.

Musical score for 'The Pikeman's March' in G major and 4/4 time. The score consists of four staves of music. The first staff begins with a treble clef, a key signature of one sharp (F#), and a 4/4 time signature. The music features a rhythmic pattern of eighth and sixteenth notes, characteristic of a march. The second and third staves continue the melody with various rhythmic variations. The fourth staff concludes the piece with a final cadence.

HONEY IN THE BAG

jig

C. Glendinning

Musical score for 'Honey in the Bag' in G major and 6/8 time. The score consists of four staves of music. The first staff begins with a treble clef, a key signature of one sharp (F#), and a 6/8 time signature. The music is a lively jig with a consistent eighth-note rhythm. The second and third staves continue the melody. The fourth staff concludes the piece with a final cadence and includes first and second endings, indicated by bracketed numbers 1 and 2 above the notes.

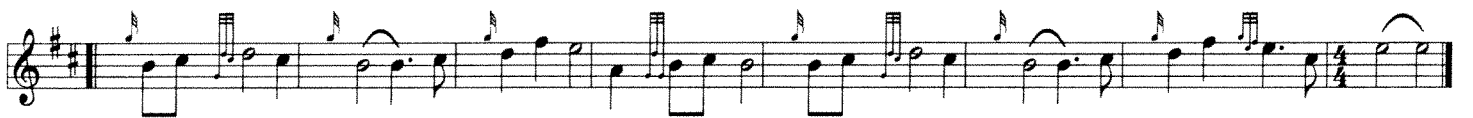
LONELY ISLAND

slow aire

Brian Reese



harmony - on 2nd part



ASPEN BANK

strathspey

T. Douglas



PIE-EYED PIPER

hornpipe

Elaine Brinklow

Musical score for 'Pie-eyed Piper' hornpipe. The score consists of four staves of music in treble clef, key of D major (one sharp), and 2/4 time signature. The melody is characterized by eighth-note patterns and includes repeat signs at the beginning and end.

KELSEY'S WEE REEL

reel

Iain Symington

Musical score for 'Kelsey's Wee Reel' reel. The score consists of four staves of music in treble clef, key of D major (one sharp), and 2/2 time signature. The melody features a mix of eighth and sixteenth notes, with repeat signs at the beginning and end.