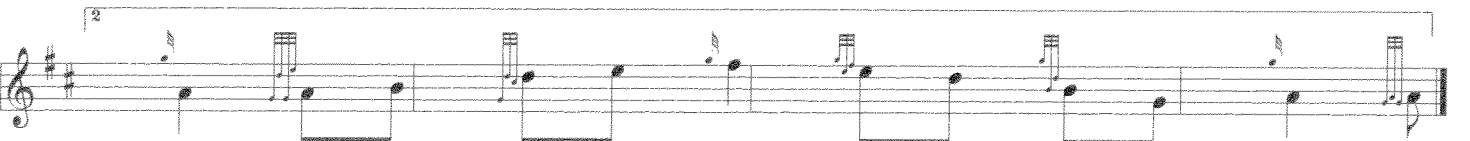
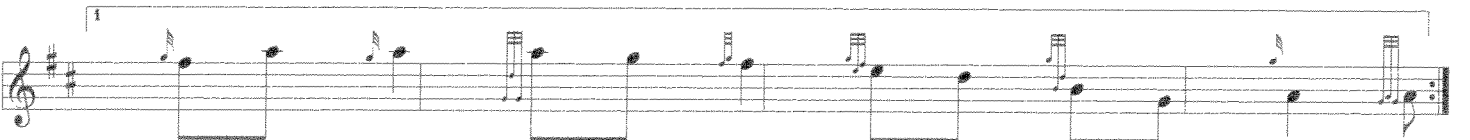
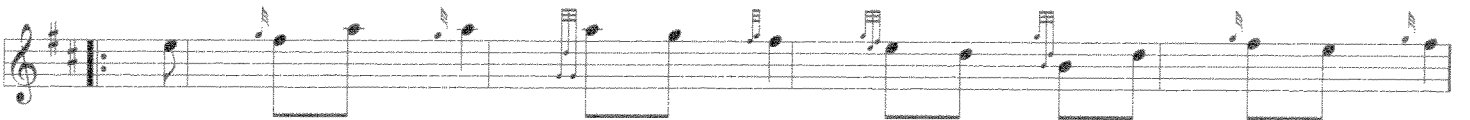
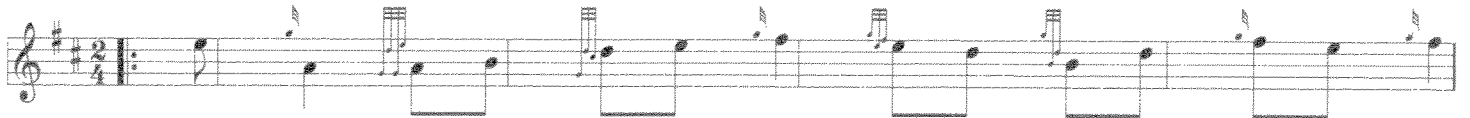


MAIRI'S WEDDING

march

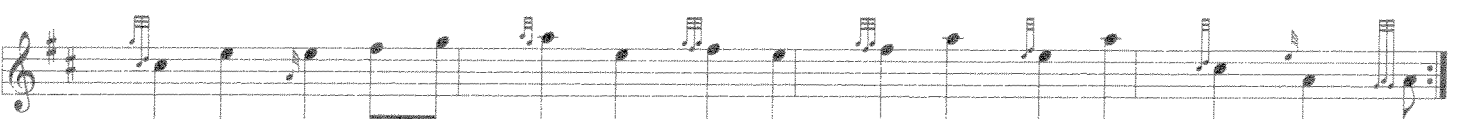
trad.



42ND HIGHLANDERS

march

trad.



THE GREEN HILLS OF TYROL

retreat march

P/M J. MacLeod

Musical score for 'The Green Hills of Tyrol' in G major and 3/4 time. The score consists of four staves of music. The first staff begins with a treble clef, a key signature of one sharp (F#), and a 3/4 time signature. The music is a single melodic line with a steady eighth-note rhythm. The piece concludes with a double bar line and repeat dots.

WHEN THE BATTLE'S O'ER

retreat march

P/M W. Robb

Musical score for 'When the Battle's O'er' in G major and 3/4 time. The score consists of four staves of music. The first staff begins with a treble clef, a key signature of one sharp (F#), and a 3/4 time signature. The music is a single melodic line with a steady eighth-note rhythm. The piece concludes with a double bar line and repeat dots.



WILL YE NO COME BACK

march

trad.

Musical score for 'Will Ye No Come Back' in G major and 4/4 time. The score consists of four staves of music. The first staff begins with a treble clef, a key signature of one sharp (F#), and a 4/4 time signature. The melody is written in a simple, rhythmic style characteristic of a march, featuring quarter and eighth notes with stems pointing upwards. The piece concludes with a double bar line.

ROWAN TREE

march

trad.

Musical score for 'Rowan Tree' in G major and 4/4 time. The score consists of four staves of music. The first staff begins with a treble clef, a key signature of one sharp (F#), and a 4/4 time signature. The melody is written in a simple, rhythmic style characteristic of a march, featuring quarter and eighth notes with stems pointing upwards. The piece concludes with a double bar line.

harmony - on repeat

Harmony for 'Rowan Tree' in G major and 4/4 time. The score consists of four staves of music. The first staff begins with a treble clef, a key signature of one sharp (F#), and a 4/4 time signature. The harmony is written in a simple, rhythmic style characteristic of a march, featuring quarter and eighth notes with stems pointing upwards. The piece concludes with a double bar line.