

I'M A YANKEE DOODLE DANDY

George M. Cohan

Musical notation for the first piece, consisting of four staves of music in treble clef, 2/4 time, with a key signature of one sharp (F#).

OVER THERE

George M. Cohan

Musical notation for the second piece, consisting of four staves of music in treble clef, 2/4 time, with a key signature of one sharp (F#).

CAISSON SONG

Edmund Gruber / arr. J.P. Sousa

Musical notation for the third piece, consisting of three staves of music in treble clef, 4/4 time, with a key signature of one sharp (F#).

YOU'RE A GRAND OLD FLAG

march

George M. Cohan

Musical notation for the first piece, consisting of four staves of music in treble clef, key of D major, and 4/4 time. The notation includes various rhythmic values such as eighth and sixteenth notes, and rests.

IT'S A LONG WAY TO TIPPERARY

march

Harry Williams & Jack Judge

Musical notation for the second piece, consisting of four staves of music in treble clef, key of D major, and 4/4 time. The notation includes various rhythmic values such as eighth and sixteenth notes, and rests.

YANKEE DOODLE

march

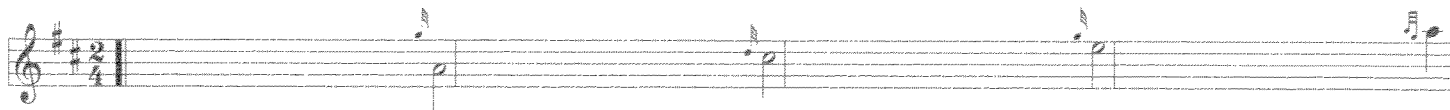
trad.

Musical notation for the third piece, consisting of four staves of music in treble clef, key of D major, and 2/4 time. The notation includes various rhythmic values such as eighth and sixteenth notes, and rests.

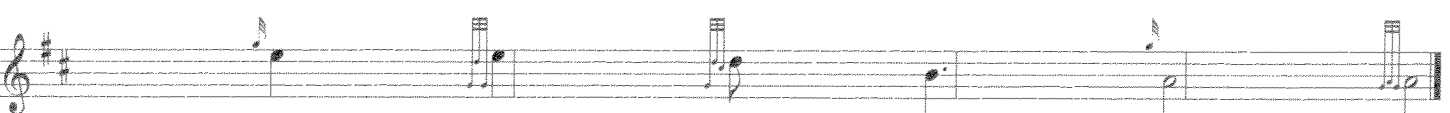
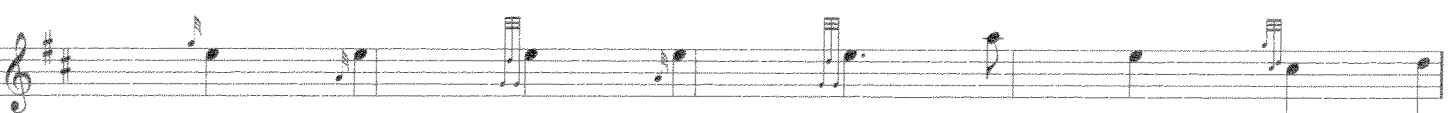
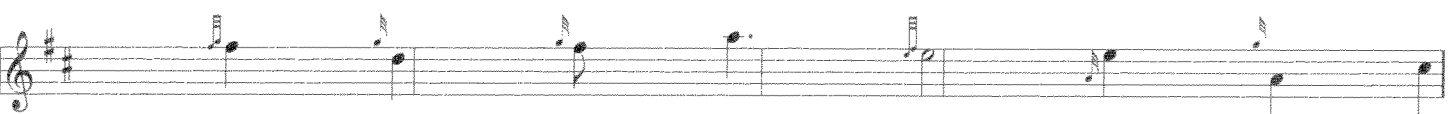
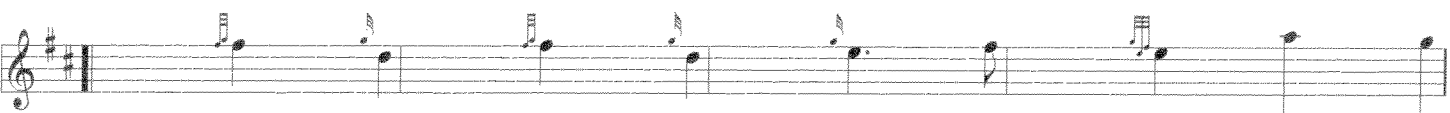
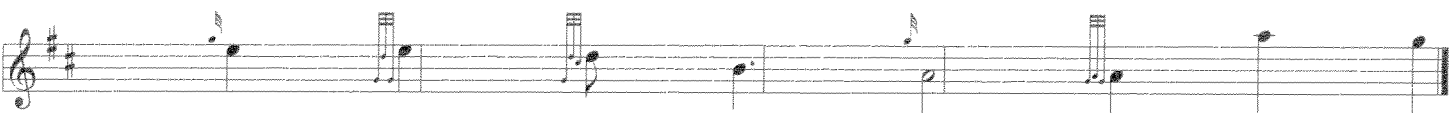
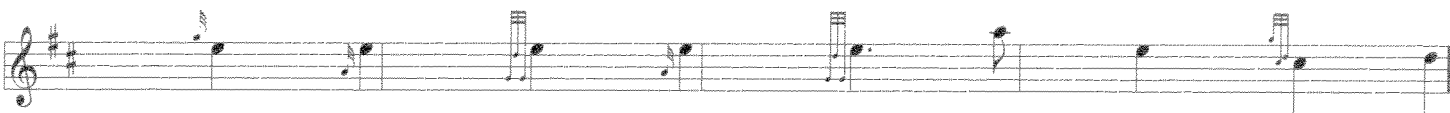
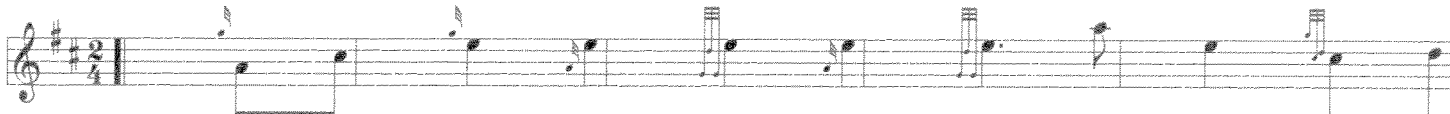
THE MARINE'S HYMN

march

Jacques Offenbach



Play above intro only if playing Marine's Hymn in set



harmony for intro line

