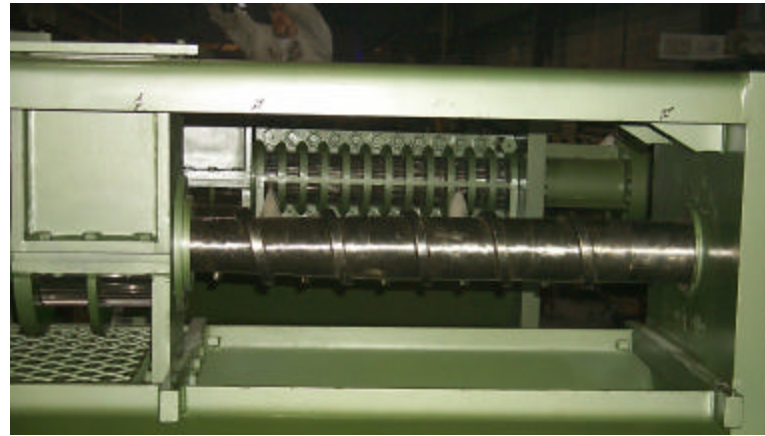


Looking for a Bargain? Look No Further



Alloy Screw Presses Model 9:7



**Remaining Stock of (2) Machines,
Buy one get one FREE \$83,000 for TWO**

- .. 75 horsepower
- .. Nine Inch Feed Quill
- .. Seven Inch Barrel
- .. Simple Shaft Arrangement
- .. High Carbon Press Shaft
- .. Hardfaced and Heat Treated Parts
- .. Belt Drive Input
- .. Automatic Hydraulic Choke
- .. Minimum Foot Print
- .. Single Piece Frame
- .. Simple, Rugged Gear Case
- .. Heavy Construction Throughout

Alloy Hardfacing and Engineering Co., Inc.
20425 Johnson Memorial Drive
Jordan, Minnesota 55352

Phone: 1-952-492-5569
WATS: 1-800-328-8408
Fax: 1-952-492-3100

**Proudly Serving
Industry
Over 50 Years**

Alloy Mechanical Screw Press

2



The Alloy Press begins with a rigid fabricated frame with extra heavy reinforcing members to assure extended life of the frame and main components.

Included in the design and construction of the press are heavy duty lifting eyes in locations which make balancing and installing the Alloy press easier.

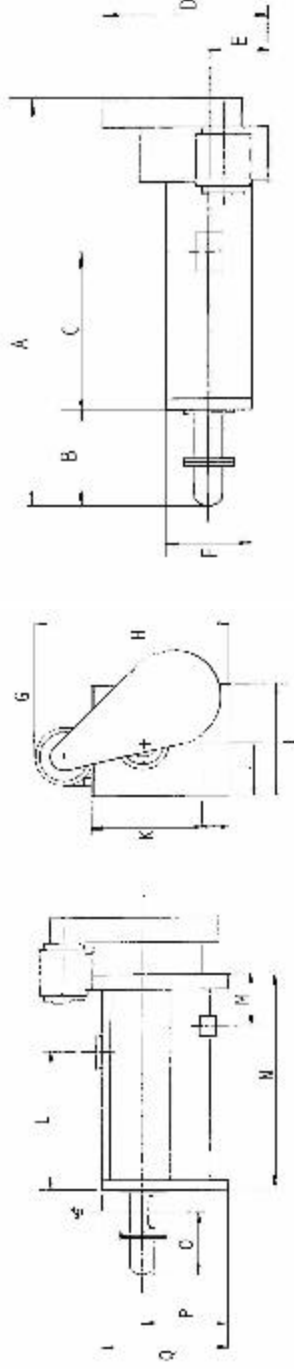
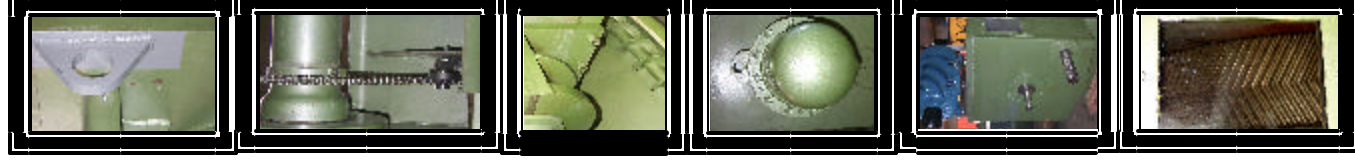
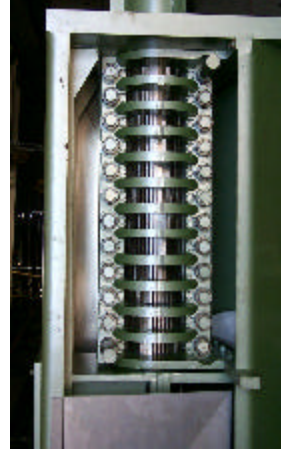
One of the design parameters of the press was to maintain a single motor design, including the drive of the fat and fines auger. The Alloy press uses a sprocket mounted on the drive sleeve to slave drive this auger.

When it came to designing the gearbox of the press, Alloy stuck with the "Kiss" principle Keep It Strong and Simple, designing the press with a single reduction gear train and providing speed flexibility via input belts and sheaves.

Coming from a vegetable oil background, where precision is critical to the process, the Alloy press was designed to have higher precision than some presses which were originally designed strictly for rendering. Alloy flights, barrel bars and knife bars are constructed to greater precision than many of the presses operating in Rendering plants today.

Top press performance is the result of constant high pressure and dwell time. The Alloy press has a total of 53" of drainage area, the highest of any press in its class. Coupled with the greater precision of the Alloy press, the result is better throughput per horsepower and lower fat residuals.

The cages of the Alloy Press are fabricated from heavy steel components ranging in thickness from 4" x 4" thickness of the bolt sections to 1-1/2" x 4" for the cage ribs. Due to the construction of these cages, repairs can be made should tramp metal or other foreign materials damage the cage.



Dimensions	A	B	C	D	E	F	G	H	I	J	K	L	M	N	O	P
English	12'0"	34"	56"	45"	12"	30"	77"	45"	21"	43"	56"	20"	87"	25"	50"	
Metric (cm)	365.8	86.4	142.2	114.3	30.5	76.2	195.6	114.3	53.3	109.2	142.2	50.8	221	63.5	127	