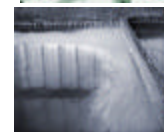
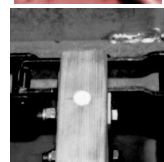




Dispersed Aeration System

Easy to Install, Efficient, Cost Effective



The effectiveness of the Alloy D.A.S. is easily seen in this photograph, showing how fats and oils from a fish processing facility have been aerated, forming an easily removed "cake".

The Alloy D.A.S. is comprised of a pump capable of handling solids, which recirculates a portion of the effluent stream through a water manifold to Aeration Jets which mix air with the recirculated water. Valves and flow meters make adjustment of the system simple and straight forward.

Alloy Gravity Separators are shipped *aeration ready* with couplings already installed. Adding the system to your current tank is a simple process:

- ◆ Partially drain your tank
- ◆ Cut tank sidewalls and install couplings
- ◆ Mount aeration trees in couplings
- ◆ Attach plumbing between recirculation pump and aeration trees

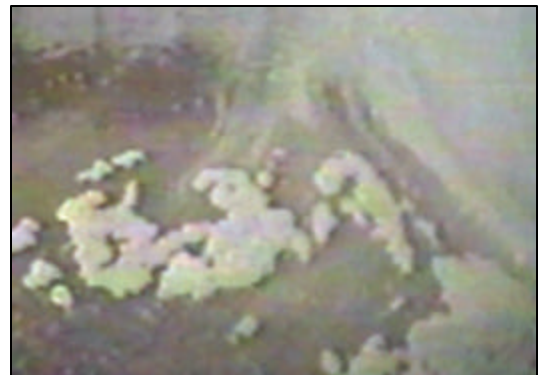
The Alloy D.A.S. is both effective and efficient. Addition of the system *will substantially increase removal rates and does so without addition of chemicals.* Chemicals can be added, to increase removal even further.

The D.A.S. uses minimal horsepower to run the recirculation pump, and with the exception of this pump operates without moving parts, making service and replacement of parts both rare and easy.

- ◆ Is waste water a problem at your process facility?
- ◆ Is your local municipality insisting you reduce effluent discharge levels?
- ◆ Is your sewer bill becoming prohibitive?
- ◆ Is an affordable solution in your budget?

ALLOY May Have Your Solution.

- .. **Increased Removal**
- .. **Lower F.O.G. and B.O.D. Levels**
- .. **Easily Installed**
- .. **Easily Adjusted**
- .. **Low Horsepower**
- .. **No Chemical Additions**
- .. **Minimal Moving/Wear Parts**
- .. **Minimum Maintenance**
- .. **Rapid Return on Investment**



This close up view of the Aeration process demonstrates how the "tiny bubbles" attach to particles in your effluent stream, lifting them to the surface for removal.

Alloy Hardfacing & Engineering Co., Inc.

20425 Johnson Memorial Drive
Jordan, MN 55352

Phone: 1-800-328-8408 or 952-49ALLOY Fax: 952-492-3100
www.alloy-inc.com or email msa@alloyhardfacing.net