



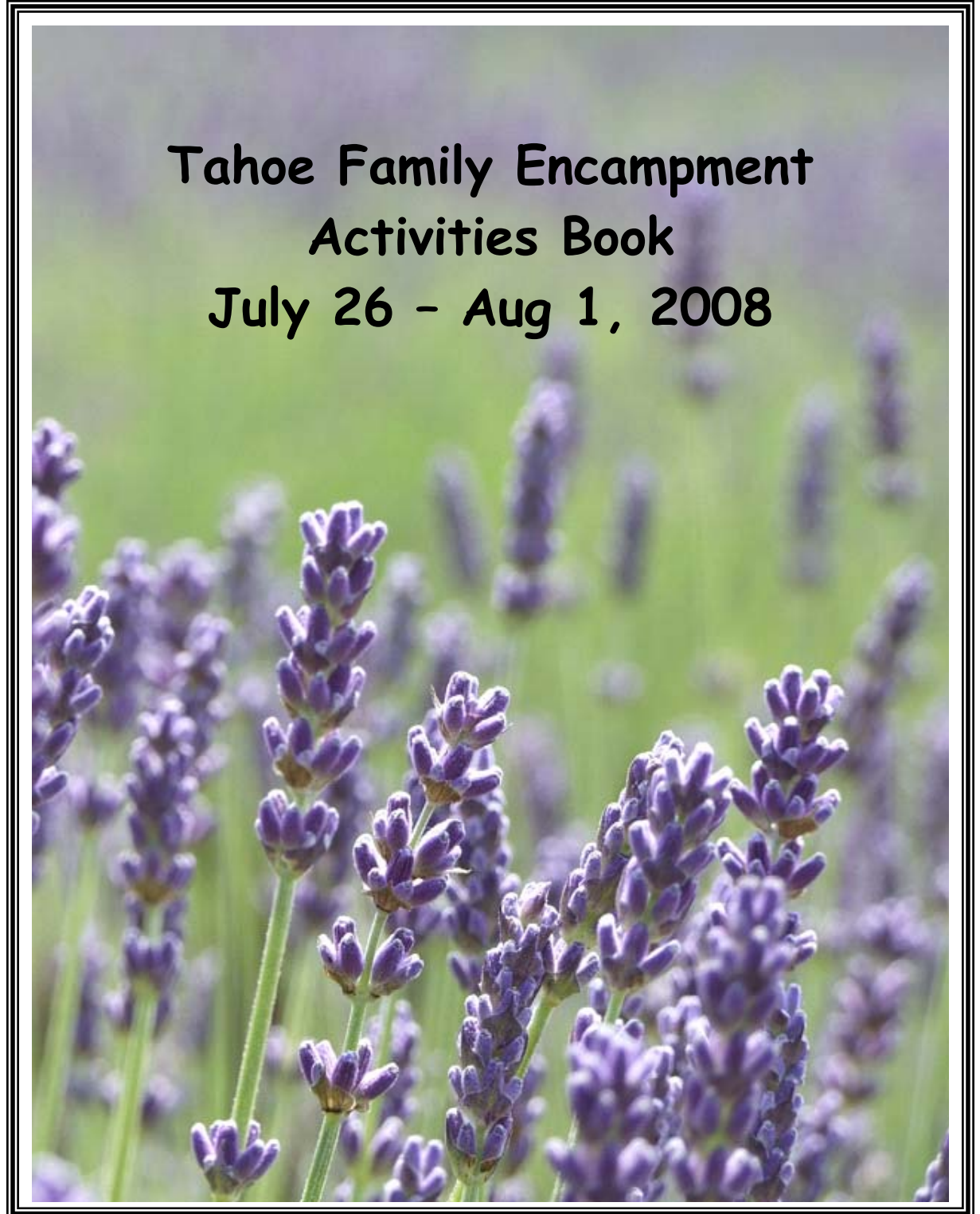


Activities Calendar

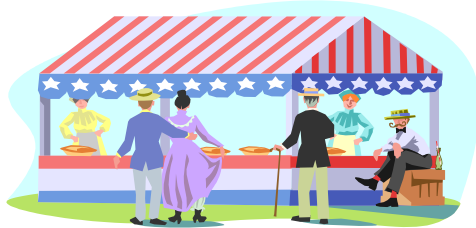
Time	Sunday 7/27/07	Monday 7/28/07	Tuesday 7/29/07	Wednesday 7/30/07	Thursday 7/31/07
1:00	<i>"Go On Your Own Activities"</i>	<i>"Go On Your Own Activities"</i>	<i>"Go On Your Own Activities"</i>	<i>"Go On Your Own Activities"</i>	<i>"Go On Your Own Activities"</i>
2:00			God's Dynamic Forrest		
3:00					
4:00				↓	
4:30				Evening Church Services	↓
5:00	↓	↓	↓		Snow Cone Cart BEFORE evening services 
6:00	Snow Cone Cart AFTER evening services 	Dessert Social AFTER Evening Services 		Western Jamboree BBQ AFTER Evening Services 	

Mark your calendars for next year's encampment July 25-31, 2009

Tahoe Family Encampment Activities Book July 26 - Aug 1, 2008



Activities Booklet



This year we have once again compiled a booklet of activities that you and your family might want to explore, on-your-own, during the free times at Tahoe Family Encampment.

In addition, this year we have many “eating” and fellowship opportunities around the “BIG TENT”:

- On Sunday after evening services the Snow Cone Cart will be available
- Then on Monday after evening services there will be a dessert social.
- Then on Wednesday there will be a “Western Jamboree” BBQ after evening services.
- Then finally, on Thursday before evening services the Snow Cone Cart will make another appearance!

Join us for all of these events and enjoy your time at beautiful Lake Tahoe!



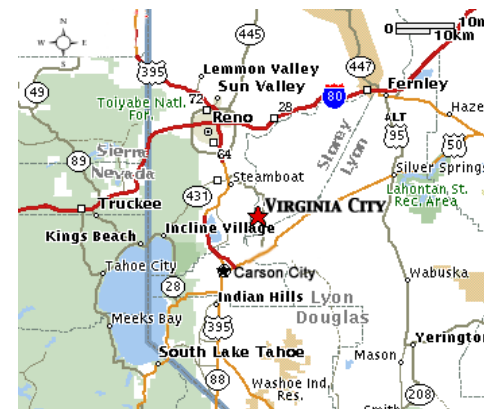
Virginia City

This is a “Go On Your Own Activity”

For those of you who like history this go-on-your-own activity to Virginia City holds a special place in the history of the West and America. The first truly industrial city in the West began in the late 1850's. Gold was found at the head of Six-Mile Canyon in 1859 by two miners named Pat McLaughlin and Peter O'Reilly.

The biggest problem in this grubstake paradise was the sticky blue-gray mud that clung to picks and shovels. When the mud was assayed, it proved to be silver ore worth over \$2,000 a ton - in 1859 dollars! Gold mixed with high quality silver ore was recovered in quantities large enough to catch the eye of President Abe Lincoln. He needed the gold and silver to keep the Union solvent during the Civil War. On October 31, 1864 Lincoln made Nevada a state although it did not contain enough people to constitutionally authorize statehood. At the peak of its glory, Virginia City was a boisterous town with something going on 24 hours a day both above and below ground for its nearly 30,000 residents.

Today, many mansions such as the Castle, the Mackay and the Savage stand as monuments to the opulence of life on the Comstock. The Virginia & Truckee Railroad runs again from Virginia City to Gold Hill. The largest federally designated Historical District in America is maintained in its original condition. "C" Street, the main business street, is lined with 1860's and 1870's buildings housing specialty shops of all kinds.



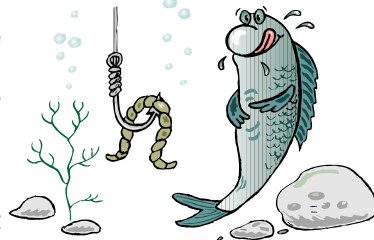
Map:

**Only 23 miles from Reno
Only 15 miles from Carson City
40 miles from Lake Tahoe**

Fishing for All...Local Trout Farms

These are "Go On Your Own Activities"

Have the fishing bug? Visit one of the Tahoe Trout farms and have fresh trout for dinner. Take the afternoon and enjoy time with the family and pay by the inch for whatever you catch! Bait and Tackle are free.



Directions: From Camp Richardson head east on SR89. Go to Hwy 50 and turn left. Go to Blue Lake Avenue turn right and the Trout farm will be on your right.

For pricing and reservations contact [Tahoe Trout Farm](#)
1023 Blue Lake Ave., South Lake Tahoe, CA
(530) 541-1491.

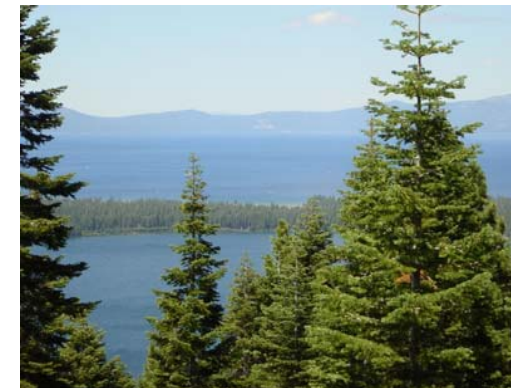
Nifty Fifty Trolley

Daily Operation thru September 6, 2005. See Schedules for hours of operation.

Route A - Stop Location	11:30am to 8:30pm	Route A - Stop Location	11:30am to 8:30pm
Factory Stores at the "Y" Daily Start	11:30 am	Timber Cove Lodge & Pier/Water Shuttle	:24
Chamber of Commerce – Historical Society	:35	El Dorado Beach (San Jose Bus Stop)	:26
Inn By the Lake	:37	Factory Stores at the "Y"	:32
Safeway Store (across from Timber Cove)	:38	Rockwater/Cantina Bar & Grill (at Cantina)	:37
Super 8/Lakeland Village (East bound)	:40	Anderson's Bike Rental	:39
Crescent V Shopping Center	:42	Pope Beach (stop on Highway)	:42
S.L. Transit/Heavenly Village-Marriot Property (Forest Inn & Suites Stop on Bellamy Court)	:45	Camp Richardson/Beacon Restaurant	:46
Embassy Suite-Harrah's (street stop at light)	:47	Tallac Historic Site/Kiva Beach	:51
Caesar's Tahoe	:49	USFS Stream Profile Chamber (great for kids)	:55
Lakeside Inn & Casino	:54	Camp Richardson Corral	:58
Horizon Casino Resort	:59	Camp Richardson Resort (Layover 15 min.)	:20
Harvey's Resort & Casino	:03	Cherry Hill Antiques/Brother's Bar	:23
Tahoe Driftwood Lodge	:05	South "Y" Shopping Center (Raley's & K-Mart)	:25
Stardust Lodge	:06	Tahoe Valley Campground	:27
Viking Lodge	:07	Factory Stores at the "Y"	:30
Rodeway Inn	:08		
Best Tahoe West	:08	Route E - Stop Location	10:45am to 6:30pm
Station House Inn	:09	Camp Richardson Resort (daily start)	10:45
Lakeside Marina/Lakeside Beach & Grill	:10	USFS Stream Profile Chamber	:50
Royal Valhalla Lodge	:11	Sno-Park Parking Area (stop on hwy.)	:52
Holiday Inn Express	:14	Eagle Point Campground	:58
Americana Inn	:16	Inspiration Point	:01
Black Bear Inn (across street at Bus Stop)	:18	Vikingsholm Parking Area	:05
Embassy Vacation Resort	:20	D.L. Bliss State Park	:10
Tahoe Queen (at Ski Run Marina)	:20	Eagle Falls	:15
Tahoe Beach & Ski Club (street stop)	:21	Inspiration Point	:17
Lakeland Village	:22	Eagle Point Campground	:19
Lakeshore Lodge & Spa	:23	Sno-Park Parking Area (stop on hwy.)	:25
		USFS Stream Profile Chamber	:27
		Camp Richardson Resort (Layover 15 min.)	:45

Table of Contents

1	Dessert Social
2	God's Dynamic Forest
3	Wonders and Glories of Tahoe
4	Western Jamboree & BBQ
5	Tahoe Queen Sightseeing & MS Dixie Dinner Cruise
6	Vikingsholm Castle
7	Family Float Trip
8	Horseback Riding Spots
9	Sight Seeing — Heavenly Ski Resort Gondola
10	Golf Courses
11	Angora Lake
12	Ehrman Mansion
13	Tahoe Amusement Park /Mini Golf & Shopping and Local Entertainment
14	South Shore Beaches and Picnic Areas
15	Fishing spots/Nifty Fifty Trolley
16	Virginia City
17	Activities Calendar



Dessert Social
(Monday, July 28th after services)

On Monday evening, after services, we will have the most delicious, mouth watering, array of desserts, you'll ever find! Cheesecake, peach pie, brownies, cookies, apple pie and ice cream, just to name a few temptations. Savor these tempting treats while enjoying this camp-wide social hour. You'll be surprised at the new friends you'll make, over a few good bites of cheesecake!



South Shore Beaches and Picnic Areas

These are "Go On Your Own Activities"

Lake Tahoe has a multitude of scenic spots and beaches where you can have a picnic and barbecue, wander along the shoreline, get sand between your toes, wade in the cool water, bask in the sunshine and get a tan! Below are a few that are located on the South Shore.

Please note:

All of the locations have picnic areas, fire pits, and restrooms unless noted. Some locations have playgrounds, boat rentals and boat ramps.

Baldwin Beach

SR 89, 4 miles south of the "Y" in South Lake Tahoe

Camp Richardson Beach

SR 89, 2.5 miles north of the "Y" in South Lake Tahoe
playground, boat rentals

Connolly Beach

U.S. HWY 50 at Timber Cove Lodge
no firepots
boat launch nearby

El Dorado Beach

Between Rufus Allen & Lakeview
playground, boat launch (dependent on lake level)

Emerald Bay Beach

no fire pits
boat dock, hiking trails, Eagle Falls, Vikingsholm Castle

Fallen Leaf Lake

Fallen Leaf Lake Road. off SR 89
boat launch

Kiva Beach

SR 89, 2.5 miles north of the "Y" in South Lake Tahoe

Nevada Beach

Elk Point Road near Round hill & U.S. HWY 50
boat launch at south end

Pope Beach

SR 89, 2 miles north of the "Y" in South Lake Tahoe

Regan Beach West of U.S. HWY 50 at Lakeview & Sacramento
no fire pits and no fires or alcohol allowed
playground

**Tahoe Amusement Park/Miniature Golf Park
and
Shopping and Local Entertainment**

These are "Go On Your Own Activities"

Tahoe Amusement Park

2401 Lake Tahoe Blvd. / U.S. HWY 50
South Lake Tahoe
530-541-1300

Magic Carpet Golf

2455 Lake Tahoe Blvd. / U.S. HWY 50
South Lake Tahoe
530-541-3787

Tahoe Bowl

1030 Freemont Avenue
South Lake Tahoe
530-544-3700

Boat Rentals/Camp Richardson Marina

Historic Camp Richardson Resort
1900 Jameson Beach Road
South Lake Tahoe
530-542-6570

Shopping/Factory Stores At The Y

Located at the intersection of US HWY 50
And SR 89
South Lake Tahoe
Open 9 am to 6 pm

For more local attractions or information call 800-698-2463 or visit
www.tahoevacationguide.com

God's Dynamic Forest
Tuesday, July 29 @ 2:00 (Meet at the Big Tent)

(For since the creation of the world God's invisible qualities—his eternal power and divine nature—have been clearly seen, being understood from what has been made, so that men are without excuse.

Romans 1:20)

When God finished His creation, He put it into motion following a strict set of laws. We call these the laws of physics. Just as we are guided in our spiritual lives by the once and forever guidance of the Bible and His holy word, so the physical world follows the Master's forever guiding laws.

Let us look at the way the physical laws have, and are, functioning in this magnificent setting. We will look at the ecological and geological processes at work here as they glorify the Master of the Universe. The heavens declare the glory of God and the earth does indeed show His handiwork!

We will take a short, easy stroll where Keith Crummer, a professional forester with over 40 years of formal education and field experience, will point out the evidences of the Hand of God Himself. Bring water, sturdy shoes and an inquisitive mind. You will not be disappointed.

We will be in the vicinity of Camp Richardson and there is no fee for this event. It is a short hike so you will not miss any of the Family Encampment presentations under the Big Tent.

More information regarding this activity will be announced during the encampment.



Wonders and Glories of Tahoe
Wednesday, July 30 @ 6 pm

Stanley Paher will narrate a fast-paced slide show, featuring beautiful and fascinating pictures, scenes and events over the past 150 years of beautiful Tahoe. From the historic figure of explorer, John Fremont, to the great '49 gold discovery, the Pony Express, ghost towns, and the magnet of the lumber industry, Stanley has a fascinating story to tell us through vintage and modern day photographs that will leave you spell bound."



Ehrman Mansion, Sugar Pine Point State Park
on Lake Tahoe's West Shore at Tahoma

This is a "Go On Your Own Activity"



This two-story Queen Anne-style home, built in 1902, is a good example of a Lake Tahoe summerhouse for the rich. In the upstairs of the mansion you will find exhibits pertaining to the Hellman-Ehrman family. A beautiful marble fireplace is in the living room, and restored authentic furniture and chandeliers are in abundance. On the grounds of the estate, is a cabin built in 1870 and many spectacular nature trails. Rangers conduct a 45-minute tour of the home during the summer months. The park entrance fee is \$5 with an additional \$2 for the tour.

For more information:

- Location Highway 89 at Pine Street, (Sugar Pine Point State Park), Tahoe City, 96145
- Phone: 530-525-7982
- Neighborhood: West Shore

Angora Lakes Hiking Trail

This is a "Go On Your Own Activity"

An easy 1/2 mile hike leads to two lakes framed by cliffs. Swimming and fishing are popular activities. Summers are crowded, so arrive early. If you like fresh squeezed lemonade...you can reward yourself at the little restaurant located at Angora Lake...there are all kinds of goodies to eat there too!

Directions: Take Highway 89 north approximately 3 miles from South Lake Tahoe to Fallen Leaf Lake Road and turn left. Turn left at the first paved road. Continue to Forest Service Road 12N14 and turn right. Watch for bicyclists along this road. Continue past Angora Lookout to the road's end at the parking lot. Dogs must be on a leash at all times. Hikers will need to bring bottled water, supportive shoes, sandals not recommended. Don't forget your camera!

Hike Rating: Level 1 (extremely easy)

Time: 1/4 to 1/2 hour (one way)



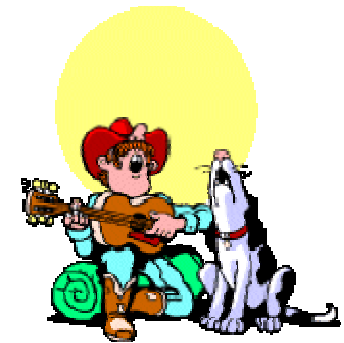
Western Jamboree Wednesday, July 30 @ 6 pm



Back by popular demand! ON WEDNESDAY evening, TFE will once again provide a "Western Jamboree" theme BBQ Dinner and Entertainment. Ya'll come experience "The Branding Iron Pit" and take home a TFE souvenir, Steer Lasso Contest, Old Time Photo Booth, Pie Eating Contest, Hay-stack Scramble, Popcorn Booth and Hay Ride!

To accommodate our evening's event, church services will be held at 4:30 PM, Wednesday, July 30th with our BBQ dinner following at 6:00 PM.

We'll have a "rootin tootin" time, so don't miss out on the BIG Western Jamboree.





Lake Tahoe Cruises
Zephyr Cove Resort

For Reservations call
888-896-3830 or 800-23-TAHOE

or
Visit the website at
www.zephyrcove.com

Ms Dixie II

This is a "Go On Your Own Activity"

Activity	Dates	Days	Time	Duration	Adult	Senior	Child
Glenbrook Brunch	5/4-8/31	Sun	9am	1.5hr	\$45	\$42	\$24
Glenbrook Brunch	6/7-8/30	Tue/Thu/Sat	9am	1.5hr	\$45	\$42	\$24
Emerald Bay Sightseeing	4/26-5/22	Daily	11am	2hr	\$41	\$38	\$20
Emerald Bay Sightseeing	4/26-10/26	Daily	2pm	2hr	\$41	\$38	\$20
Emerald Bay Sightseeing with Lunch	4/26-10/26	Daily	11am 2pm	2hr	\$53	\$50	\$32
Family Fun	5/23-8/31	Daily	11am	2hr	\$41	\$38	\$20
Family Fun with lunch	5/23-8/31	Daily	11am	2hr	\$53	\$50	\$32
Emerald Bay Sightseeing Early Dinner	6/8-8/31	Sun-Fri	5pm	2hr	\$61	\$58	\$31
Showboat Dinner Cruise	6/7-8/30	Sat	5pm	2hr	\$71	\$68	\$41
Dinner & Dance	4/26-6/6	Daily	6:30pm	3.5hr	\$71	\$68	\$41
Dinner & Dance	6/7-8/31	Daily	7:30pm	3.5hr	\$71	\$68	\$41
Dinner & Dance	9/1-10/26	Daily	6:30pm	3.5hr	\$71	\$68	\$41
Dinner & Dance	10/25-4/4	Sat	6:30pm	3.5hr	\$71	\$68	\$41

Tahoe Queen

Activity	Dates	Days	Time	Duration	Adult	Senior	Child
Emerald Bay Sightseeing	5/23-8/31	Daily	11am	2.25hr	\$46	\$43	\$22
Emerald Bay Sightseeing	5/23-8/31	Sun	2:30pm	2.25hr	\$46	\$43	\$22
Emerald Bay Sightseeing	9/1-10/26	Daily	12pm	2.25hr	\$46	\$43	\$22
Tales of Tahoe	5/26-8/31	Mon-Sat	2:30pm	2.25hr	\$46	\$43	\$22
Tales of Tahoe with Afternoon Tea	6/4-8/27	Wed	2:30pm	2.25hr	\$66	\$63	\$42
Ports of Call Dinner	5/23-8/31	Sun-Fri	6:30pm	3.5hr	\$89	\$86	\$51
Captains Dinner Dance	5/24-8/30	Sat	6:30pm	3.5hr	\$109	\$106	\$71

Golf Courses

This is a "Go On Your Own Activity"

Incline Village Golf—Mountain Course

With spectacular green sites and contours, the Mountain Course demands more accuracy than distance. "Shot making" skills are necessary to navigate the terrain. Carved out of the pines with no harsh transition areas and no artificial landscaping, this course is all natural and a real challenge and joy to play. It's a tribute to its brilliant designer, Robert Trent Jones, Jr.



The mountainous 18 hole course features challenging par 3's averaging over 150 yards in length, and four par 4's that will continue to challenge even the most proficient golfer. Every hole abounds with creativity and character in design, and many have incredible views of Lake Tahoe and the surrounding Sierra Nevada mountains. Shots should be straight to target sloping landing areas among pines and babbling brooks. [For pricing and reservations call 775.832.1150](http://www.golfincline.com/reservations.htm) or visit their website www.golfincline.com/reservations.htm.

Lake Tahoe Golf Course

Just minutes from the South Shore Casinos (2500 Emerald Bay Road, S. Lake Tahoe), the Lake Tahoe Golf Course is located in a mountain meadow surrounded by the High Sierras. This spectacular 18-hole golf course will challenge golfers at all levels. [For pricing and reservations call 530.577.0788](http://www.latetahoegc.com) or visit their website www.latetahoegc.com.

For other local course visit www.tahoebest/golfing/

Don't Miss Seeing Lake Tahoe From the Mountaintop

This is a "Go On Your Own Activity"

You won't want to miss riding the new \$25 million Heavenly Ski Resort's aerial gondola which takes you to the top of Heavenly ski area for an unmatched view of Lake Tahoe and the Sierra Range. Make sure that you get off at the first stop or you will miss the views because downhill cars do not stop. This is a go-on-your-own activity that can be done anytime during your stay. The Gondola hours of operation are from 10-4 daily.



Your eight-passenger cabin will whisk you 2.4 miles up the mountain, giving you the ride of your life! You'll enjoy a view of Lake Tahoe and the Sierra Nevada mountain range usually available only to mountain climbers. Just when you think it can't get any better, you arrive at the 14,000 sq. ft. mid-station observation deck. At 9,123 feet you're treated to views of the Carson Valley to the east and the Desolation Wilderness to the west...not to mention, jaw-dropping shore-to-shore views of Lake Tahoe. [For pricing and reservations call \(775\) 586-7000.](http://www.skiheavenly.com/summer/gondola_heavenly/)

Directions: See map. A city owned parking garage is located near the base of the Gondola and is available for your use. Access parking garage by turning east on Heavenly Village Way (formerly Park Ave.) off of Hwy 50 and left on Bellamy Court.



www.skiheavenly.com/summer/gondola_heavenly/

Vikingsholm Castle

This is a "Go On Your Own Activity"

Tours of Vikingsholm Castle are available seven days a week from mid-June until the end of September. The first tour of the day starts at 10:00 A.M. and the last tour at 4:00 P.M. All tours are guided tours and take approximately one-half hour. The tour fee is \$5.00 for adults and \$3.00 for youths 6 to 17. Children under 6 are free. The maximum number of people on a tour is 49.

Limited parking is available in the Vikingsholm parking lot off of Highway 89. (It is advisable to come for morning tours as there are more parking opportunities at that time.) A one-mile steep, but well defined, trail leads from the parking lot to Vikingsholm. Many scenic views can be enjoyed during this walk. There are various resting places along the trail. It is to be stressed, though, this is a steep trail.

Additional parking is provided for a fee of \$3.00 in the Day Use Area of Eagle Point State Park. A trail from the Day Use area proceeds along the south shore of Emerald Bay to Vikingsholm. This is a 1.7 mile hike. The trail is longer than the trail from the parking lot off of Highway 89, but not as steep.

Bus service to the parking lot is available from both North Shore and South Shore. There is no public boat service to Vikingsholm, but Vikingsholm can be reached by private boat. A dock is provided for loading and unloading only. Beaching a boat is allowed in the bay from dawn to dusk. Tour boats are available from South Shore and North Shore. These boats allow passengers to view Vikingsholm from the water, but they do not dock in Emerald Bay.





TRUCKEE RIVER RAFTING

with MOUNTAIN AIR SPORTS

This is a "Go On Your Own Activity"

Rafting on the Truckee River is a wonderful family outing for all ages. This is a great 2-3 hour self-guided, five mile long trip down the Truckee River from Tahoe City to the River Ranch Hotel.

For pricing and reservations call 888-584-RAFT if you make reservations you will get a group discount.

Or visit their website at the below link:

www.truckeerriverrafting.com/tahoe/SITE/top/listing.cfm/activity/165/184.61654.72965298/direct?c=1

Directions: Leave Camp Richardson, travel North on Hwy #89 towards Emerald Bay. When you get to Tahoe City, turn left at the "y" (which is the first stop light). This will put you back onto Hwy #89. Travel 4 miles to Truckee River Raft Co. Landmarks: On the left side of the road you will see River Ranch Lodge & Restaurant and on the right side will be Truckee River Raft Co. Parking Lot. A sign will read, "Free Raft Parking". You will see a big blue raft. Turn into the parking lot, go up the hill to the rafting company.

Items to bring: Shoes, sandals or flip-flops are OK. Sunscreen, towels, plastic bags for dry and/or wet clothing and shoes. No glass allowed on the raft and no Styrofoam.

Lake Tahoe Horseback Riding Spots

This is a "Go On Your Own Activity"



Camp Richardson Corral

Minimum age requirement is 6 years and Maximum weight is 225 . Available rides are as follow:

- Trail Rides (1 Hour)
- Extended Trail Rides
- Breakfast Rides (8-10 am)
- Steak Rides (4:30-7 pm)

Located at Camp Richardson.

For pricing and reservations call 530.541.3113.

Zephyr Cove Stables

Minimum age requirement is 7 years and maximum weight is 225. Call the above for Guided Trail Ride Prices and current times.

Located just 4 miles from casinos on Hwy. 50 in S. Lake Tahoe, Nevada.

*For pricing and reservations call 775.588.5664.
<http://www.zephyrcovestables.com>*

Zephyr Cove Stables

For other horse riding locations visit:

<http://www.tahoestbest.com/Places/horseback.htm>