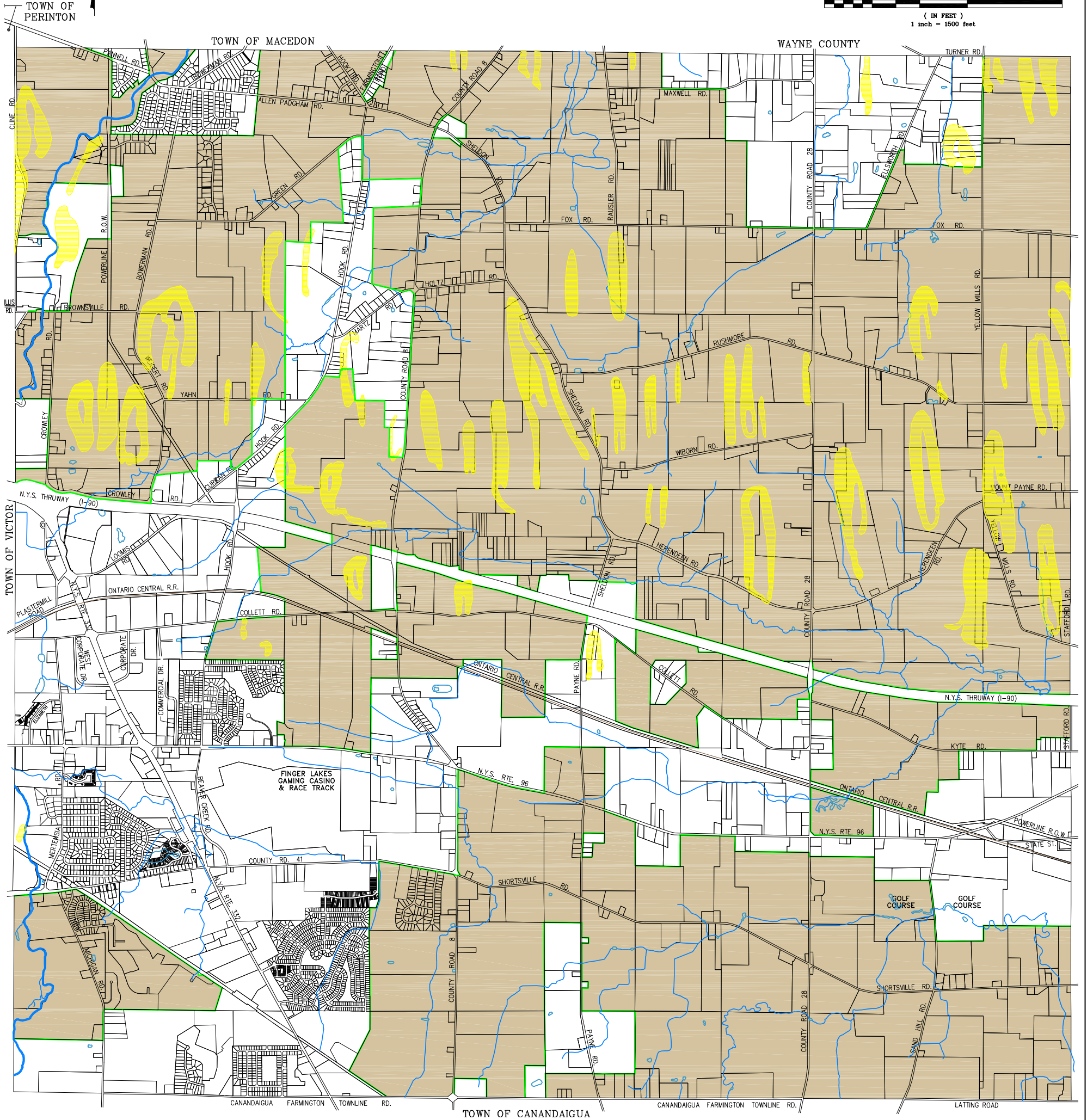
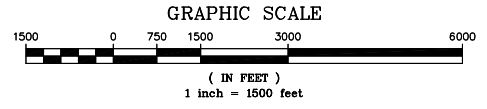




TOWN OF FARMINGTON COMPREHENSIVE PLAN



NOTE: THE BOUNDARIES OF THE COUNTY AGRICULTURE DISTRICT NO. 1 ARE SUBJECT TO CHANGE EACH YEAR WITH LAND BEING ADDED. LAND MAY ONLY BE REMOVED DURING THE EIGHT-YEAR ANNIVERSARY OF THE DISTRICT. THE NEXT EIGHTH YEAR ANNIVERSARY FOR AGRICULTURE DISTRICT NO. 1 IS NOVEMBER 2012. FOR THE LATEST BOUNDARY INFORMATION PLEASE CONTACT THE ONTARIO COUNTY PLANNING DEPARTMENT'S WEBSITE.

SOURCE OF DIGITAL DATA:
YEAR 2002, ONTARIO COUNTY PLANNING DEPARTMENT,
20 ONTARIO STREET, CANANDAIGUA, NEW YORK 14424

LEGEND

-  CONSOLIDATED AGRICULTURAL DISTRICT NO. 1
-  INDICATES AREAS OF STEEP SLOPES

MAP NO. 9

ONTARIO COUNTY
CONSOLIDATED AGRICULTURAL DISTRICT NO. 1
AND AREAS OF STEEP SLOPES



ENVIRONMENTAL • TRANSPORTATION • CIVIL
175 Sullys Trail, Suite 202
Pittsford, New York 14534
Ph: 585.385.7417 | Fax: 585.385.3741
luengineers.com



JULY 2011

A:\3193-03\Map_09.dwg