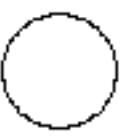
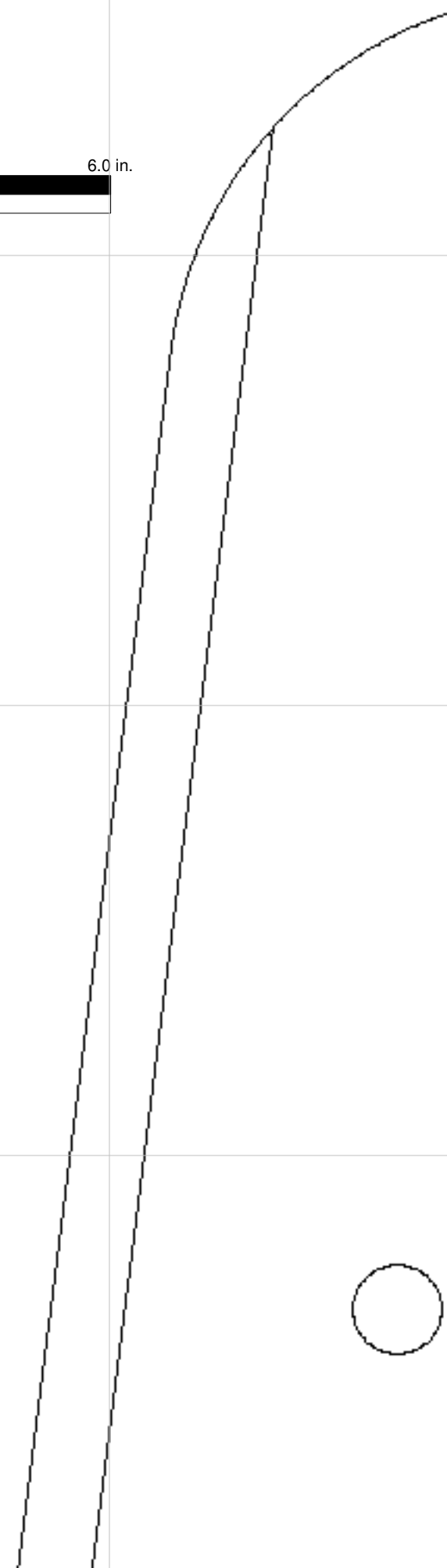
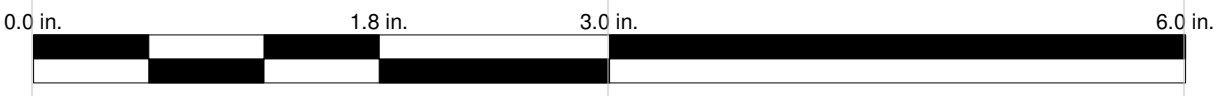
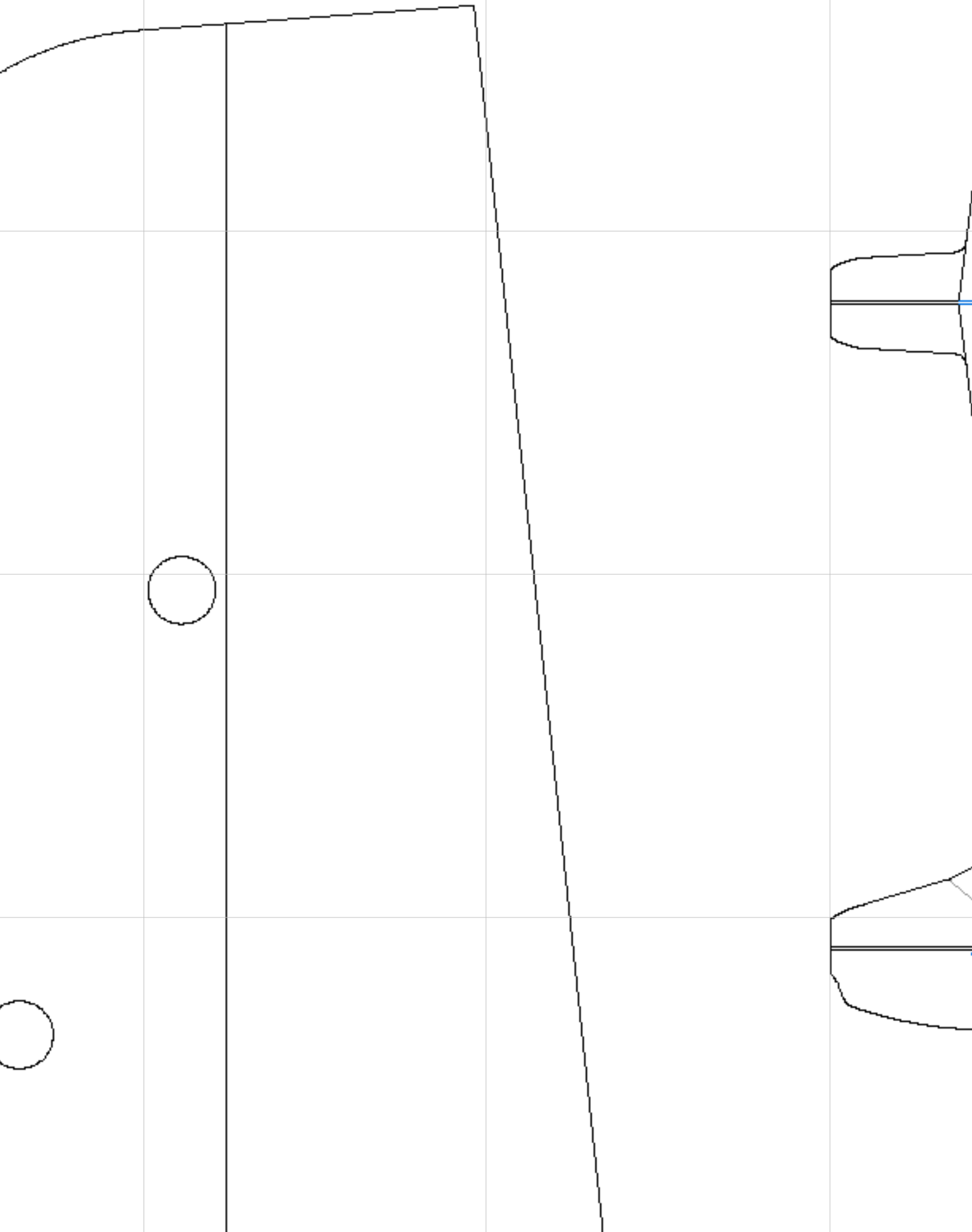


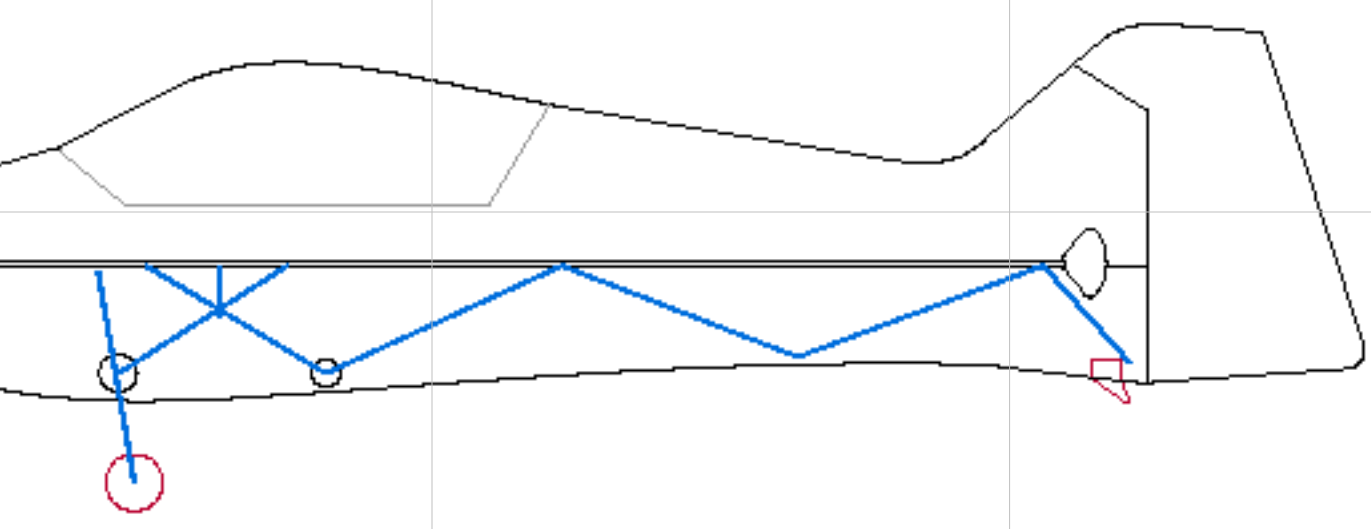
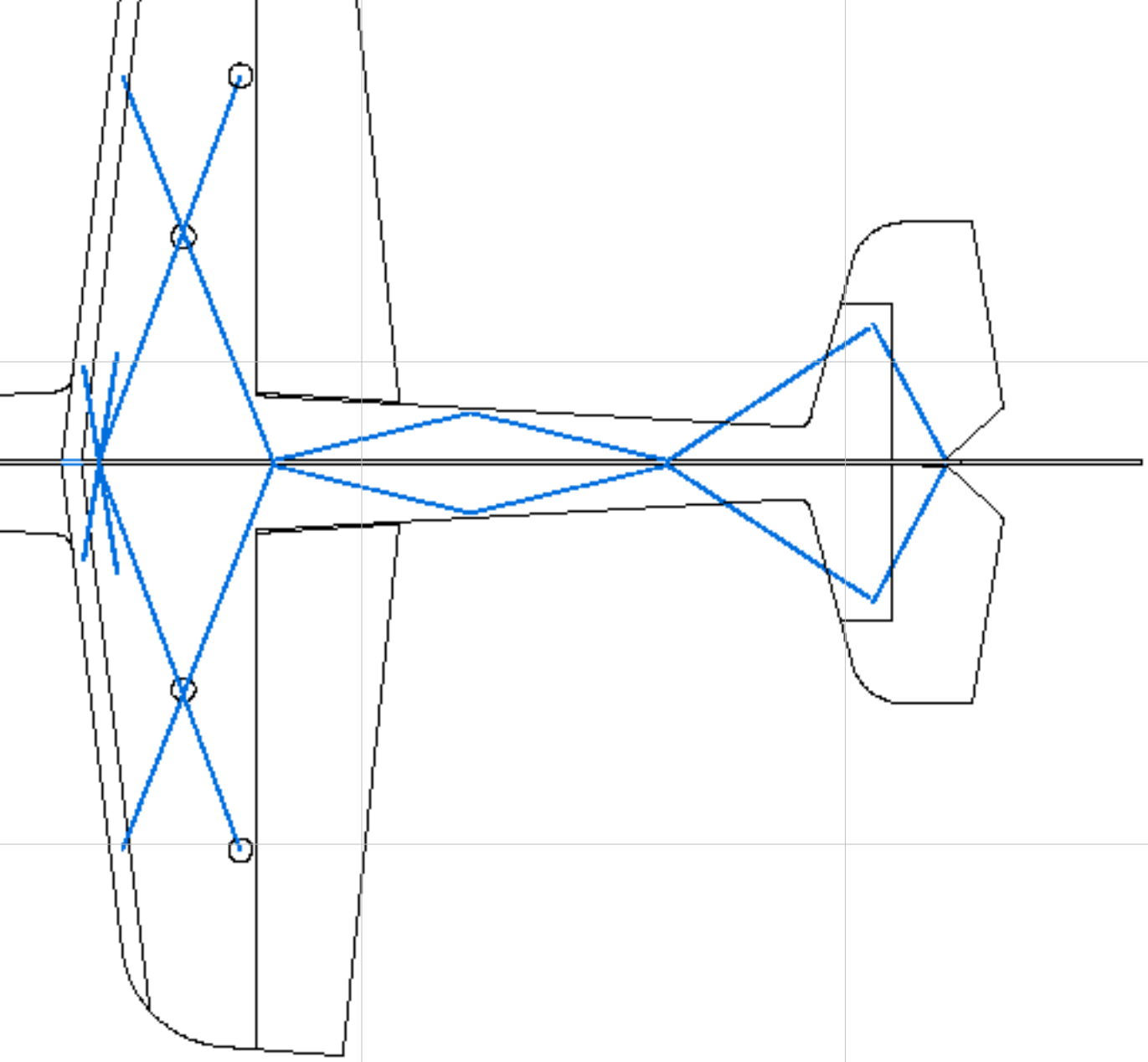
Inches

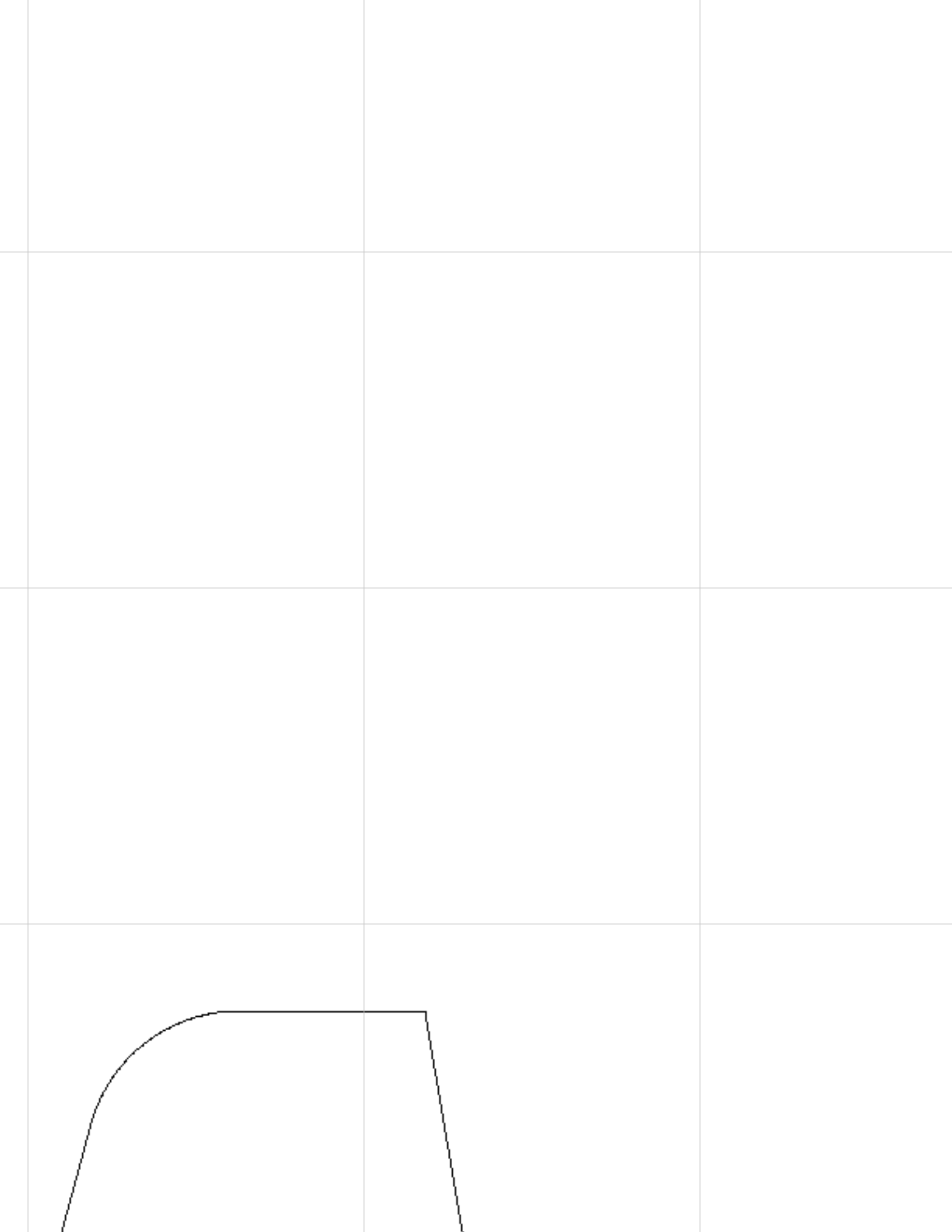
0 1 2 3 4 5 6

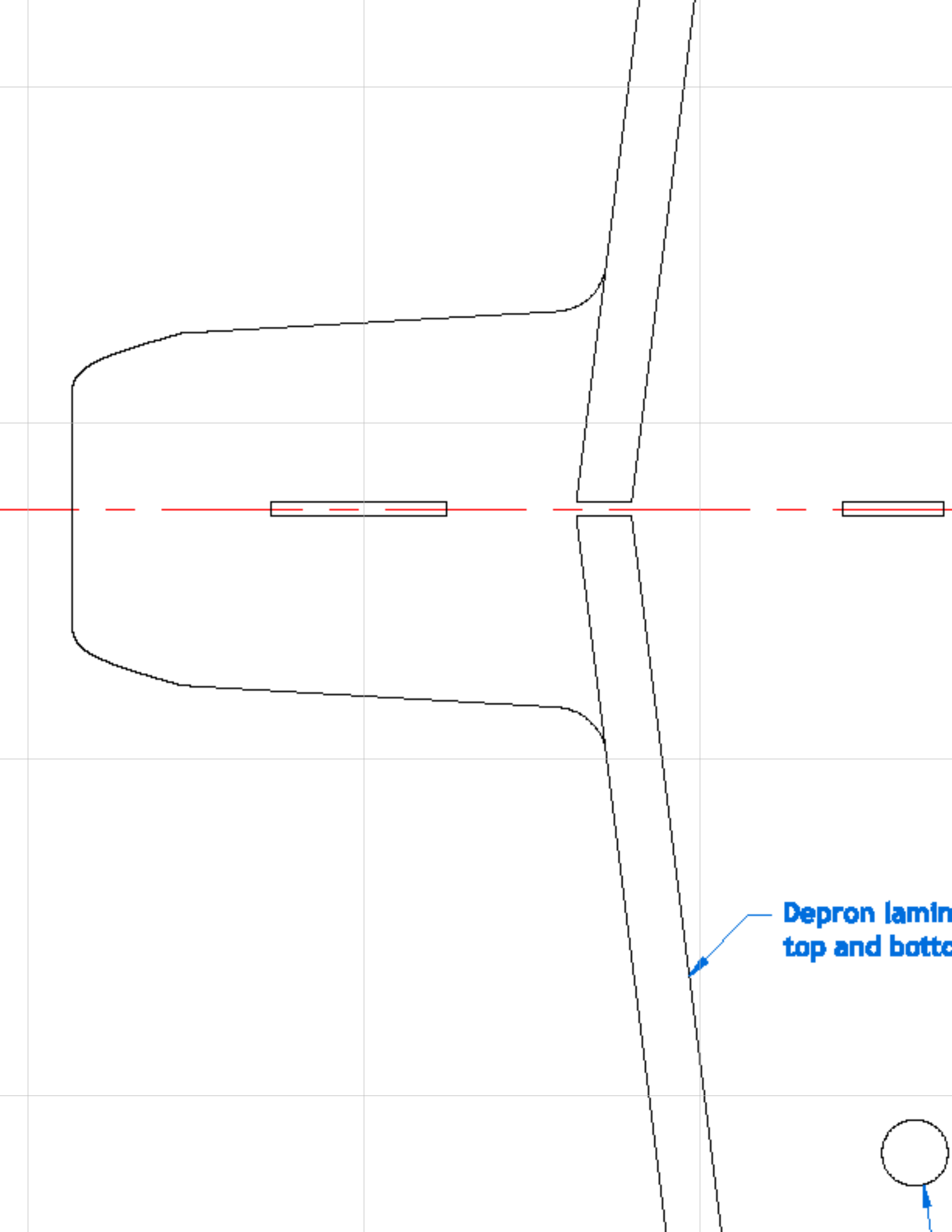


ues

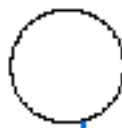


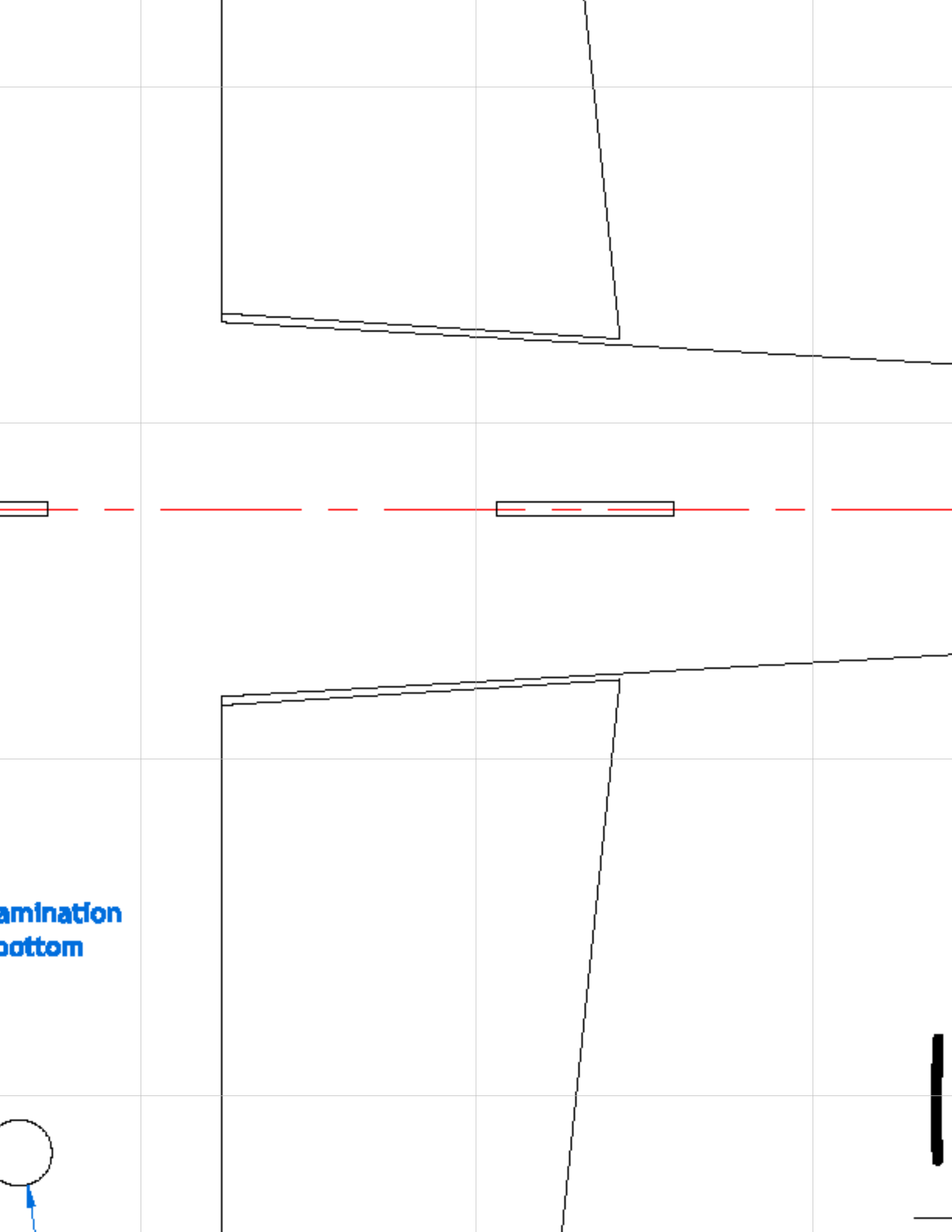






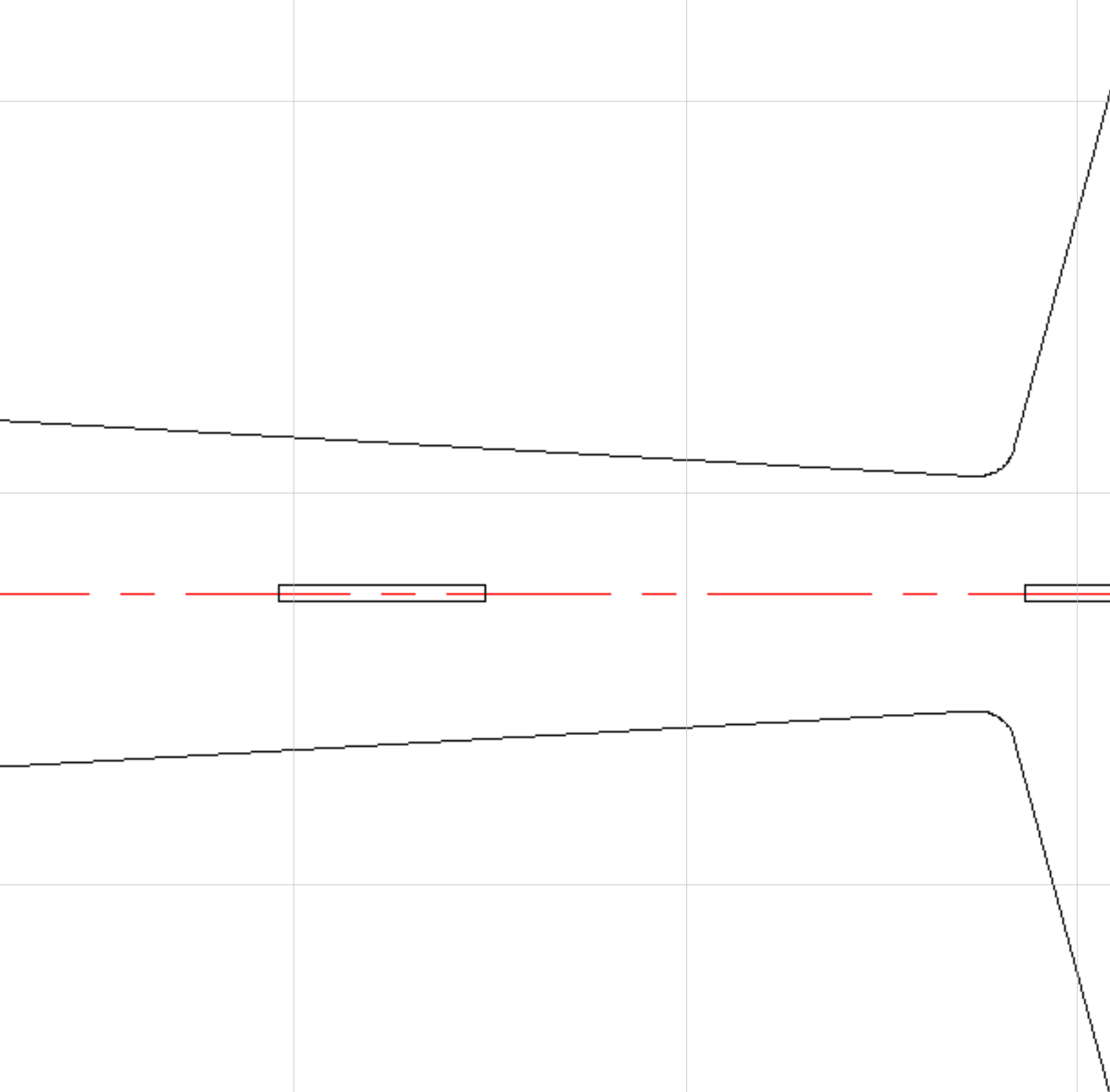
Depron lamin  
top and bottom



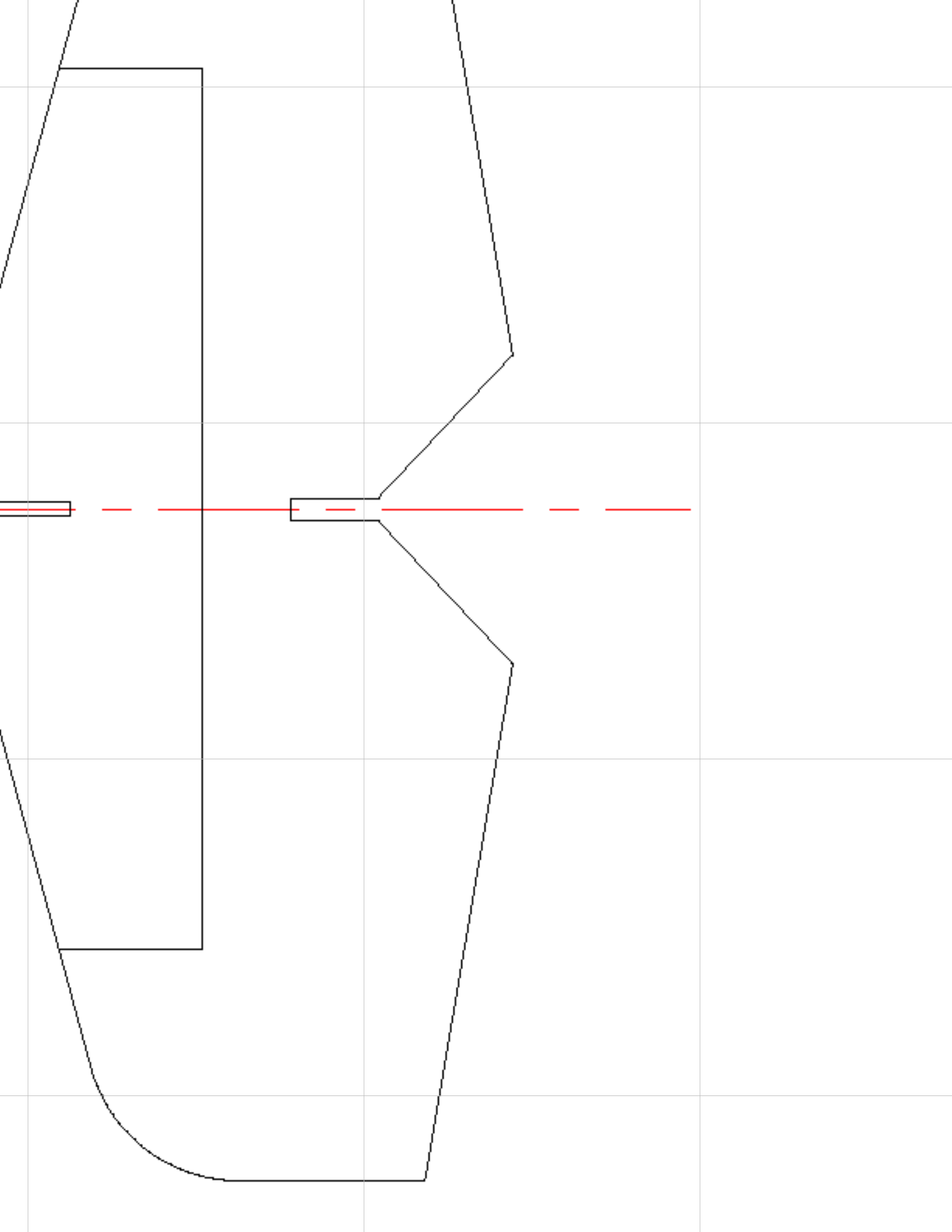


amination  
bottom



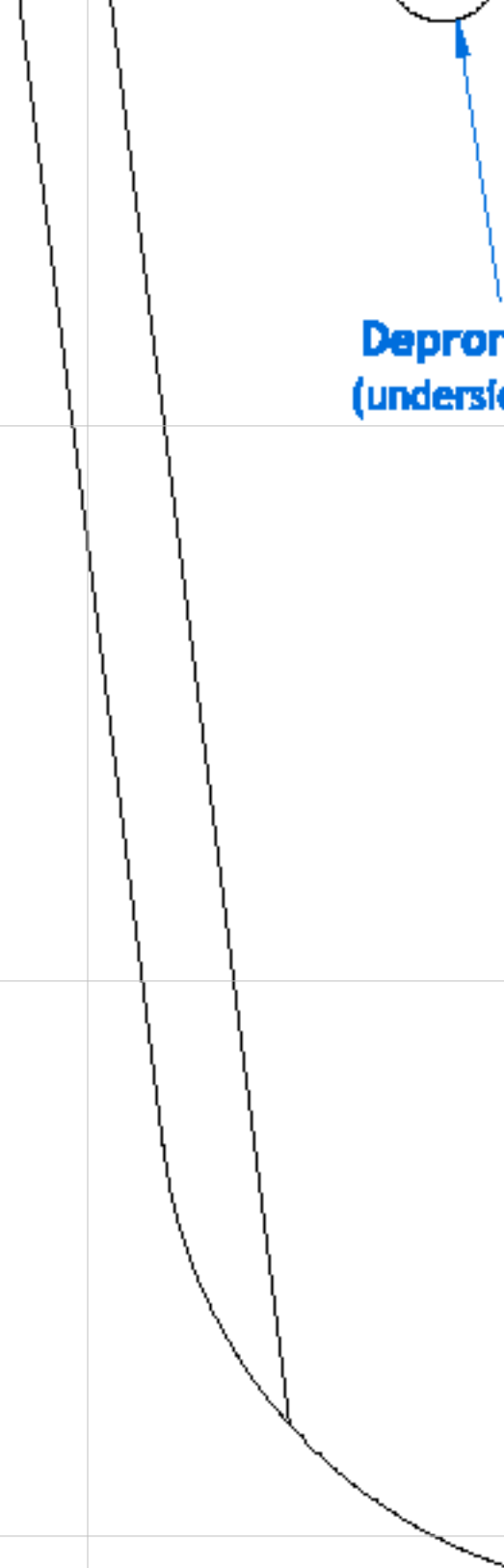


Index 2

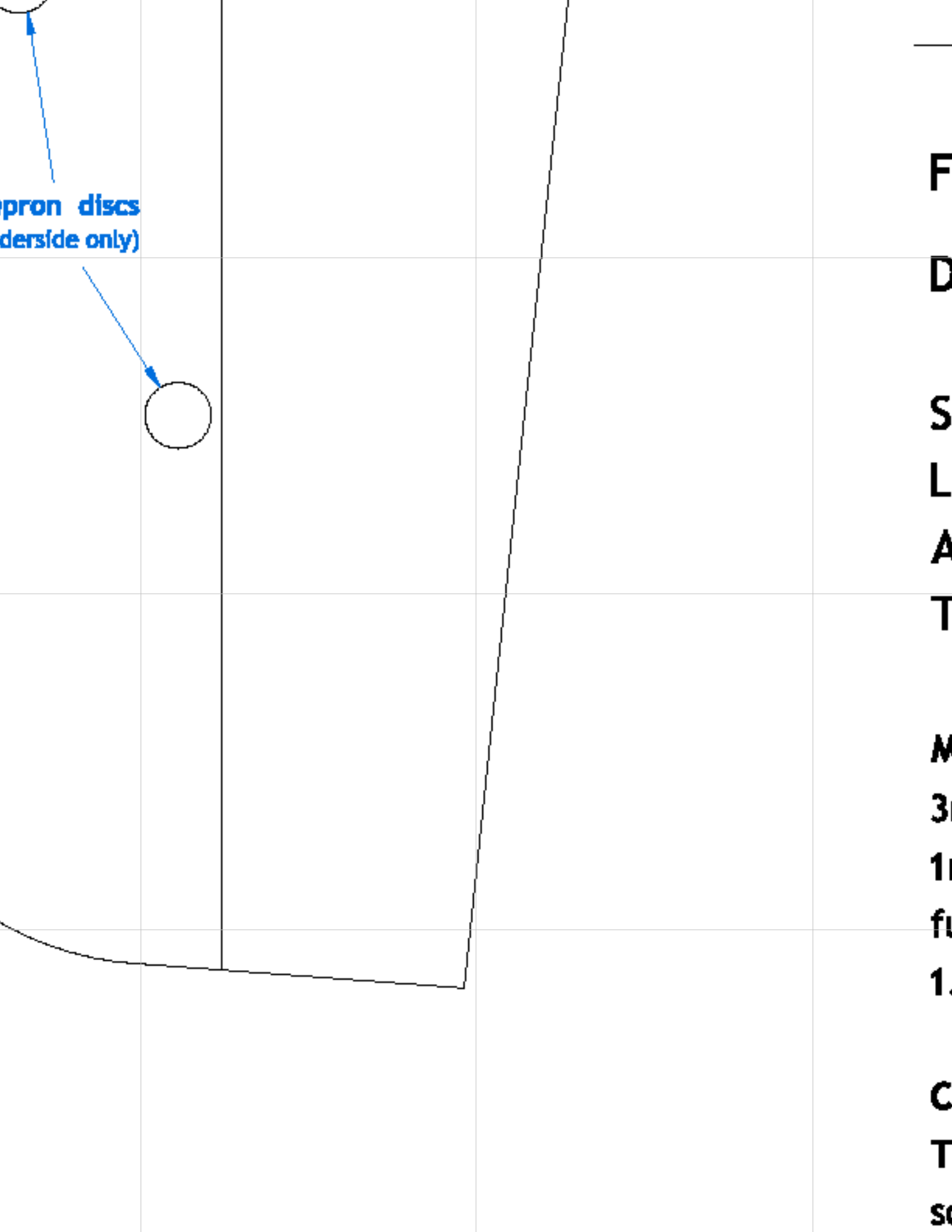




Depron  
(undersf



pron discs  
(underside only)



F  
D  
S  
L  
A  
T  
M  
3  
1  
fu  
1.  
C  
T  
SO

---

## **F3P style indoor aerobatic plane**

**Designed by Aidan Healy**

**Span: 750mm**

**Length: 793mm**

**Area: 12.6sqdm**

**Target AUW: 110 - 125g**

### **Materials:**

**3mm Depron profiles and laminations**

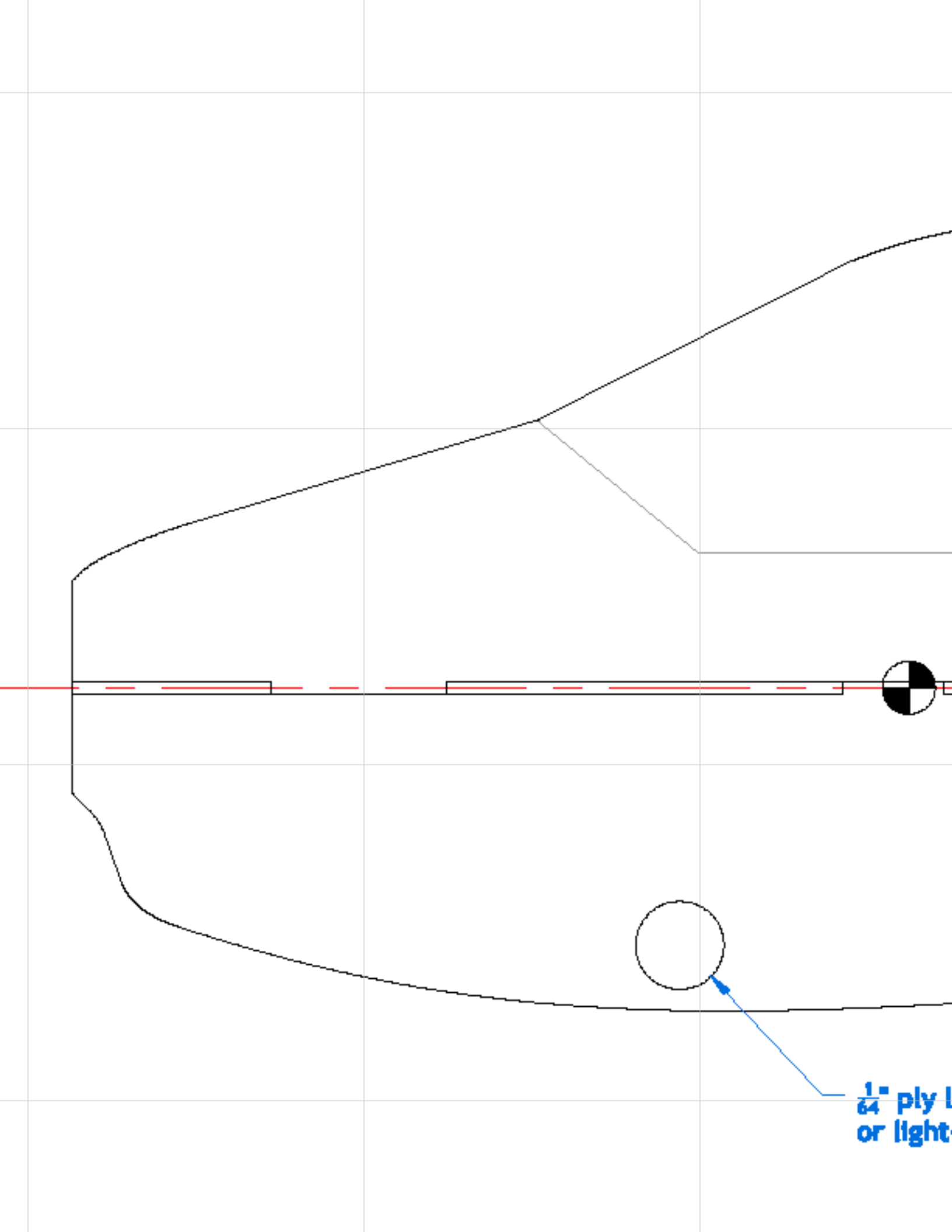
**1mm carbon rod bracing (could use 0.7mm for fuselage)**

**1.5mm carbon rod landing gear legs**

### **Comments:**

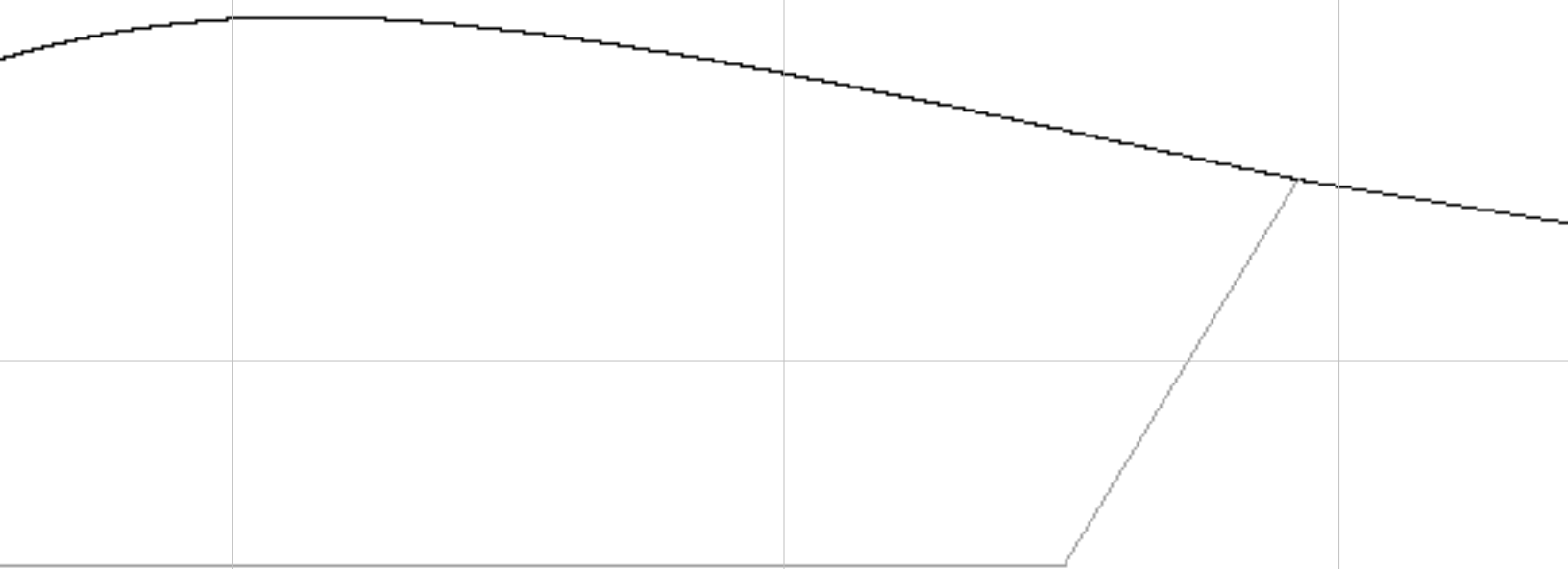
**The leading edge lamination can be rounded or left square. Depron discs and LE laminations could be 2mm**





1/4" ply 1  
or light

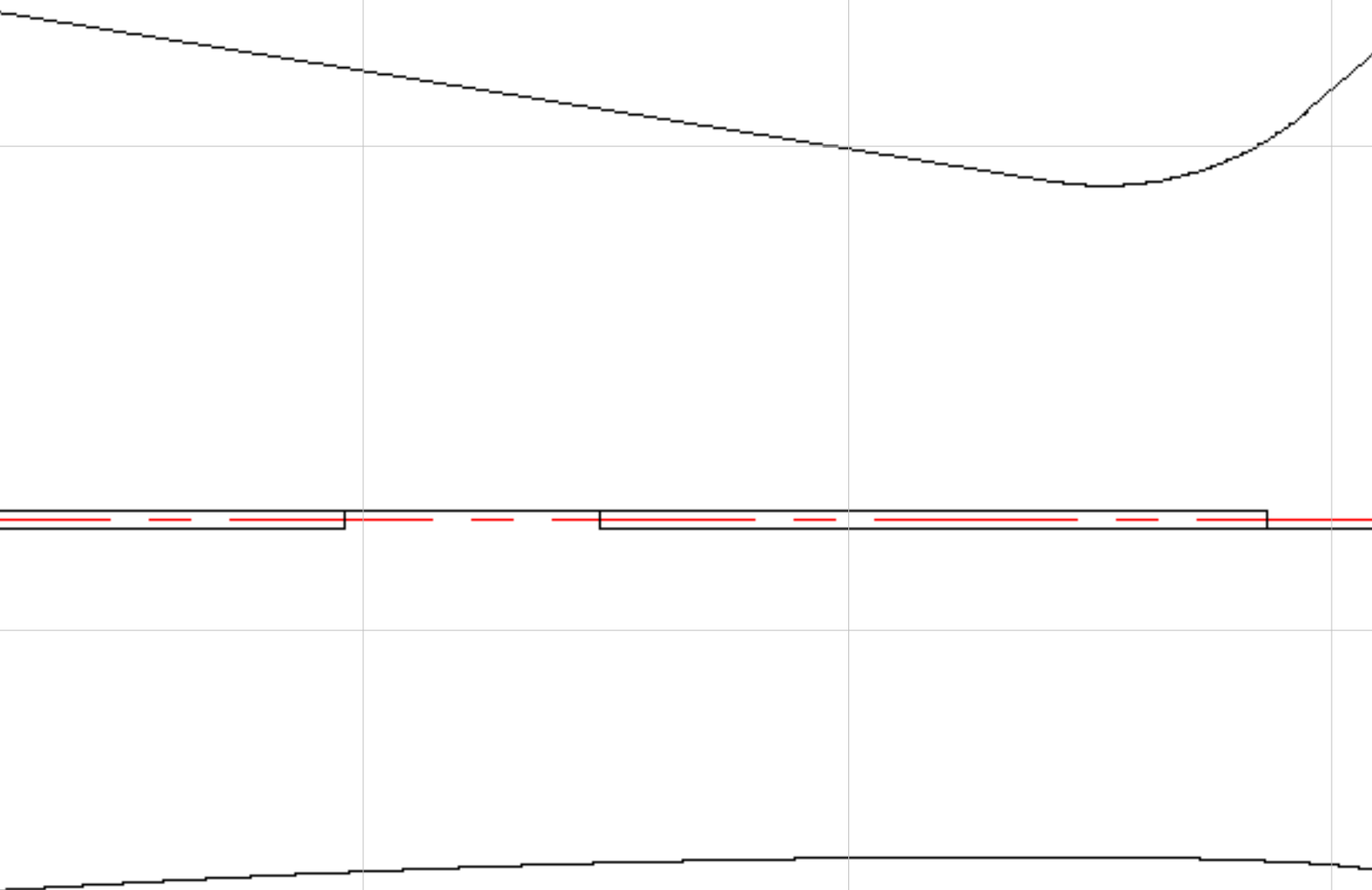
so  
d



Depron disc

ply lamination  
light-ply insert

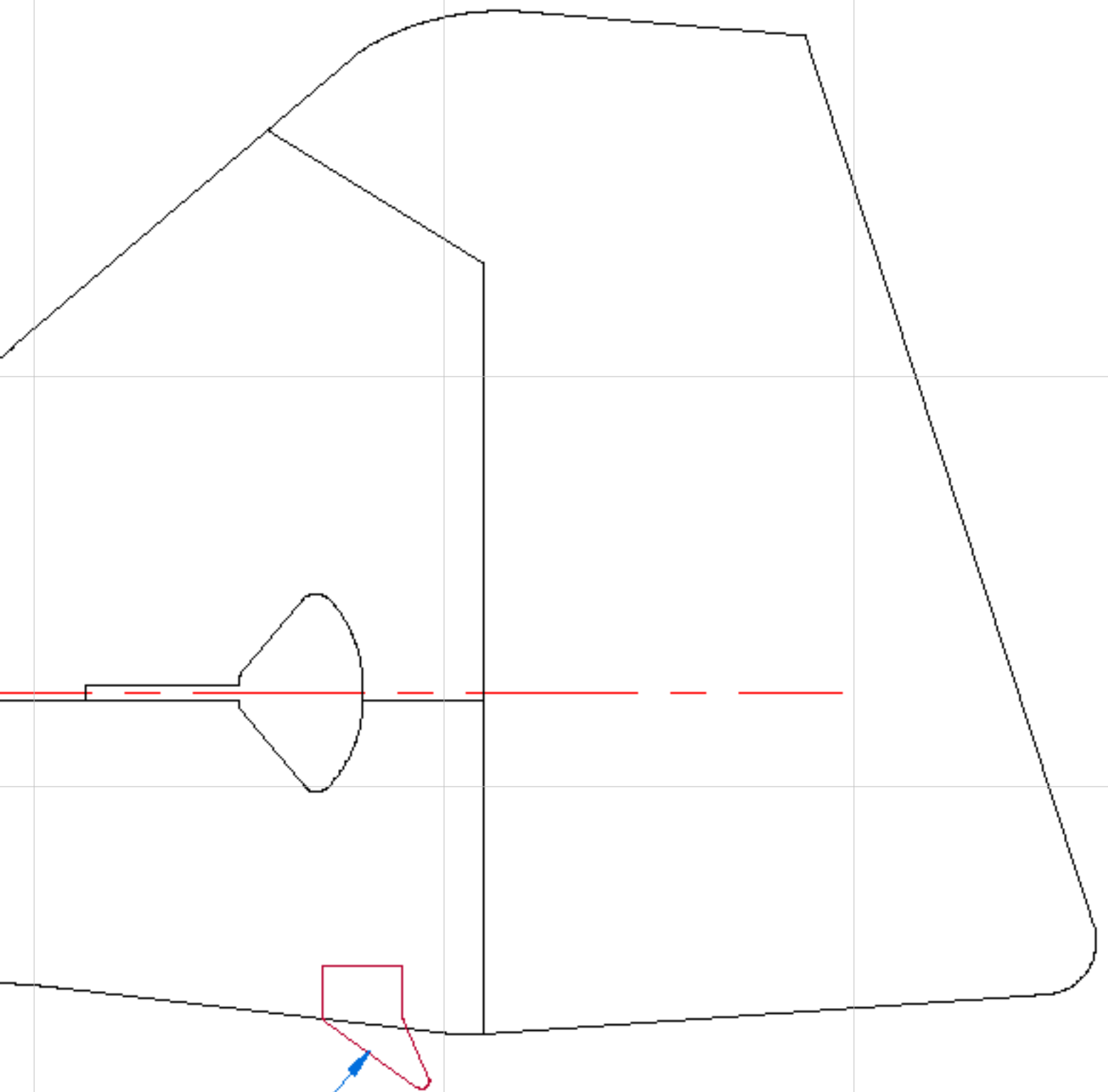
square. Depron discs and LE laminations could be 2mm  
depron instead of 3mm.



GI

2

mm



Glassfibre or  
 $\frac{1}{64}$ " ply skid