

COVID-19 Updates

DON'T FLUSH WIPES!



We know you're working hard to keep yourselves healthy during COVID19 Shelter-in-Place.

We have seen an increase in our sewer discharge flows during this pandemic period. This increase in peak flow currently is not a significant issue for us. However, in addition to the increased flow, we are also noticing an increase flushing of toilet paper, paper towels, rags, and disposable wipes.

Help us keep our sewers healthy. Remember to never flush wipes, paper towels or tissues because they clog our pump stations and our pipes! The District has 17 pump stations and it has become a major maintenance issue, resulting in additional costs to maintain the system (see photos below).

For more information, go to www.cupertinosanitarydistrict.org where you will find additional information and links to recent media coverage, or contact us at (408) 477-7300.

Our Mission

- To protect the public health and environment.
- To provide for safe and cost-efficient collection of sewage waste.
- To provide for effective conveyance to the Treatment Plant.



20863 Stevens Creek Boulevard
Suite 100
Cupertino, CA 95014

Phone: 408.253.7071 Fax: 408.253.5173
www.cupertinosanitarydistrict.org

▶ We regularly clean out our pump station wetwells to prevent accumulation of debris and wipes

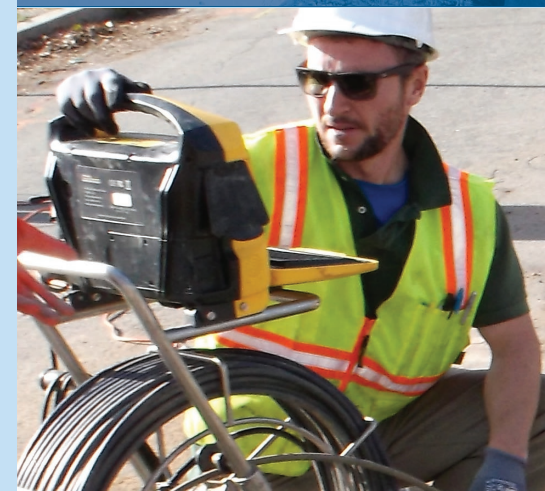


Wipes and Debris trapped in Pumps



Five bags of wipes and debris from pump station cleaning

What is Cupertino Sanitary District Doing for You?

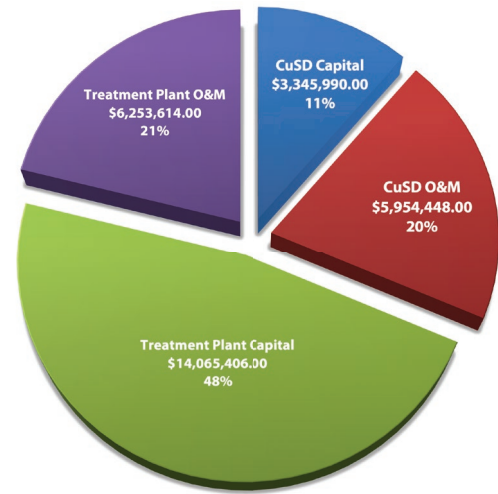


Cupertino Sanitary District

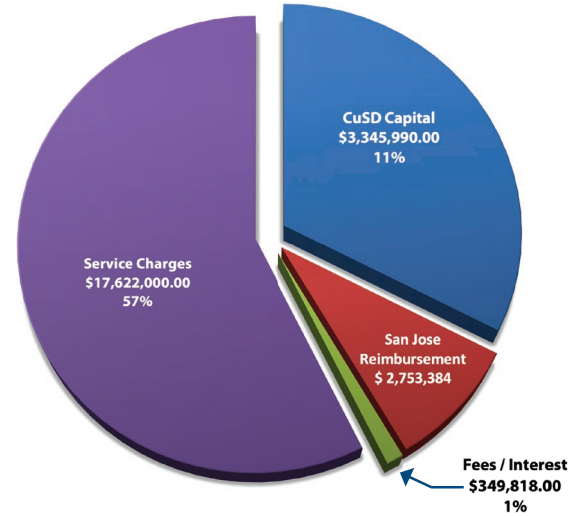
2020 ANNUAL REPORT

Facts and Figures

EXPENSES FOR FY 2019-20



REVENUES FOR FY 2019-20



District total revenue was \$30.7m, which included a \$10M loan.
Total expenses were \$29.6 m, of which major expenses were as follows:

- | | | | |
|------------------------------------|-----------|-------------------------------------------|----------|
| • Payments to the City of San Jose | \$ 20.3 M | • Legal Expenses | \$ 0.8 M |
| • District Maintenance | \$ 3.2 M | • Outfalls Payments to SJ and Santa Clara | \$ 1.6 M |
| • District Operations/Management | \$ 1.8 M | • Loan Payment | \$ 3.3 M |
| • District Capital Expenses | \$ 3.3 M | | |

Our Prospect Pump Station Rehabilitation

Traffic control in place during construction



Inside dry-well with three 1,500 gallon per minute pumps



Three new plastic wet-wells installed



Project completion with new sidewalk, pavement and landscape restored



Notable Accomplishments

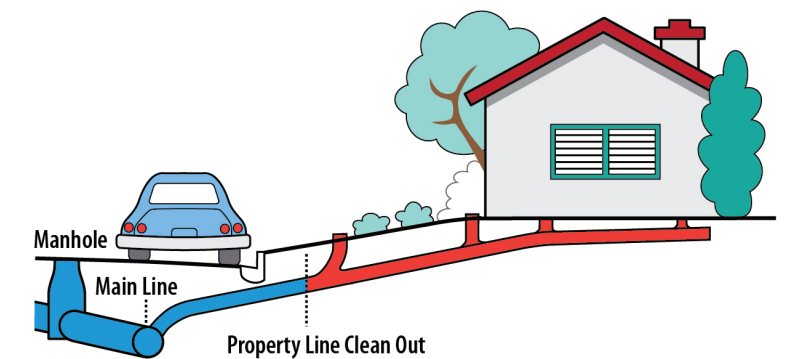
- The District has responded to COVID-19 by continuing its operations and maintenance without interruption. However, we do believe the pandemic is resulting in an increased cost to the District. Please do your share to help us keep our sewer system running smoothly.
- The District has implemented cost control measures to provide fiscal accountability to our rate payers as a result of significant increase in cash requirement at the San Jose/Santa Clara Wastewater Facility.
- The District completed a complete Rehabilitation of Prospect Pump Station at a cost of \$2.4 million.
- District has now completed 100% of closed circuit television videos (CCTV) of our sewer mains, allowing us to prioritize repairs and capital projects.

Who's Responsible for What?

HOMEOWNER'S RESPONSIBILITY:

The owner is responsible for the "Upper Lateral" portion of the House Lateral. If a blockage occurs within the property line, then it is up to the homeowner to take responsibility.

A Property Line Clean Out is required by the District to service Lower Laterals. It is the owner's responsibility to have one installed, properly maintained, and accessible at all times.



Lower Lateral

The District maintains the Lower Lateral from the cleanout at the property line to the main line.

Upper Lateral

The property owner maintains the Upper Lateral.

DISTRICT'S RESPONSIBILITY:

The District is responsible for the lower lateral portion of the house lateral. The main sewer line is serviced by the District. If a property line cleanout does not exist, the District will not be able to access our portion of the lateral. It is the responsibility of the homeowner to have a property line clean out installed.

PSA:

Don't flush tissues - they're not the same as toilet paper!



Use the trash can instead.

Great for cleaning, Not great for flushing!!

Toss em' in the trash



ONLY THE 3 P'S, PLEASE!

TOILET PAPER, PEE, & POOP
EVERYTHING ELSE BELONGS IN THE TRASH BIN! YES, EVEN WIPES!!
#WIPESCLOGPIPES