



PLANT SYSTEMS ENGINEERING

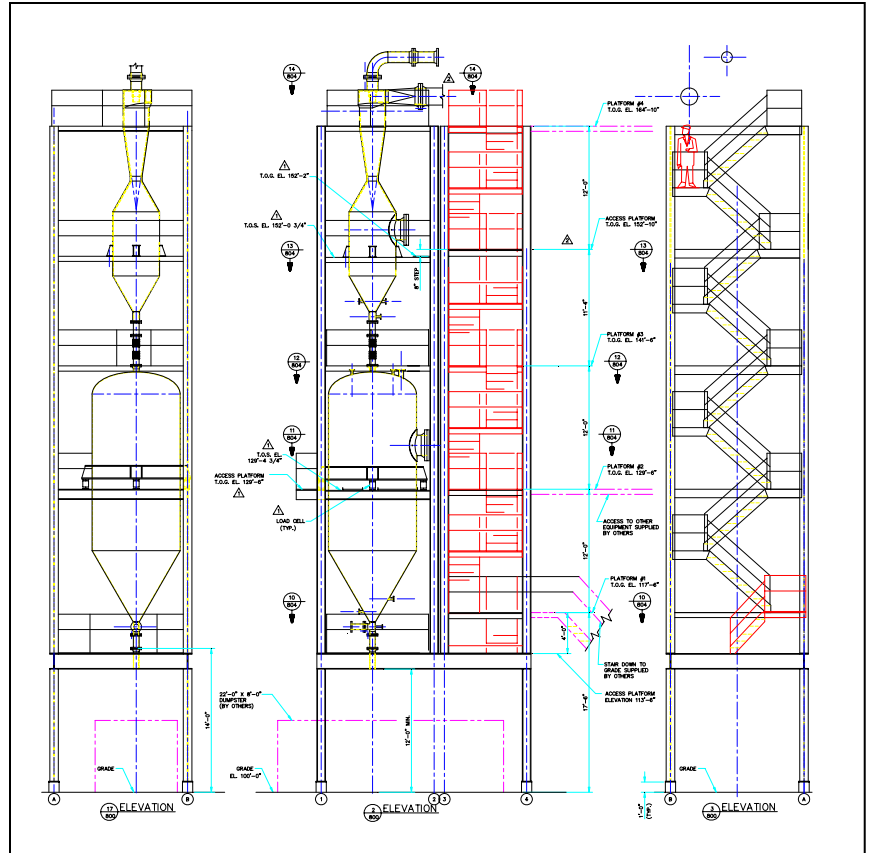
PARTICULATE CYCLONE SKID: REFINERY

Client: GSM Industrial, Lancaster, PA
Project Location: GE Oil and Gas-CONMEC LLC - Valero Refinery, Paulsboro, NJ

Project Requirements: Provide detailed structural and mechanical engineering for multi-stage fines collection system utilizing cyclones and vessels mounted on load cells.

Project Elements:

- Calculate dead and live loads including those caused by piping thermal expansion
- Create equipment general arrangements based on owner P & ID.
- Engineer piping and pipe support systems considering thermal expansion.
- Equipment and stair tower skids shop constructed, shipped to site and lifted.
- Analyze loads during crane picks
- Provide details and considerations for field applied structural steel fire proofing.



Typical detail of structural steel fire proofing

General Arrangements – multi-stage refinery fines collection equipment skid and stair tower

THE PLANT SYSTEMS GROUP, INC.

507 N. York St., Suite 2A
Mechanicsburg, PA 17055

717-795-9122 Ext. 11 717-795-9525 Fax www.plantsys.com