

MODEL: B5524-11-DS

Size

Projection 5-1/2"
Height 24"

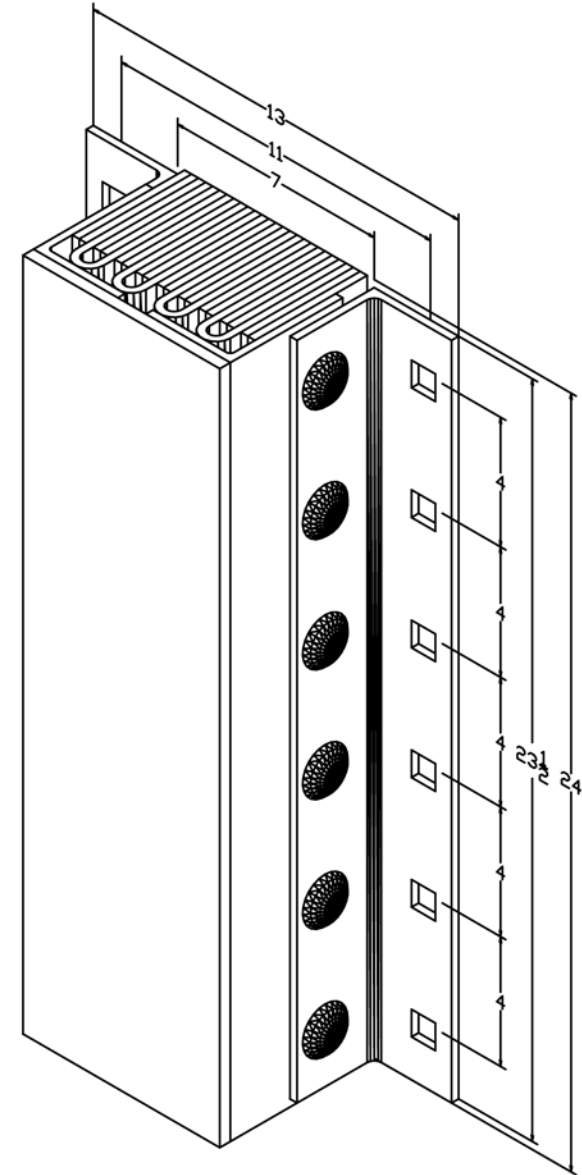
Length

-Overall 13"
-Anchor Holes 11"
-Rubber 7"

Angle Size (2) 1/4"x3"x3"x23-1/2"

Slot Angle Size 1/4"x3"x4"x23-1/2"

Face Plate Size (1) 3/8"x24"x7"



All measurements are within +/- 1/8"