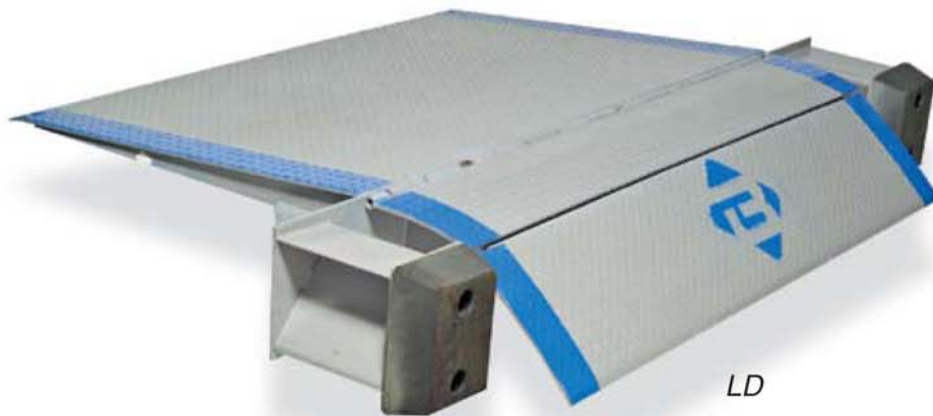


Lo-Dock Levelers



LO-DOCK LEVELER (LD)

- **Raises edge-of-dock levelers to proper working height**
- **Completely assembled; no site welding required**

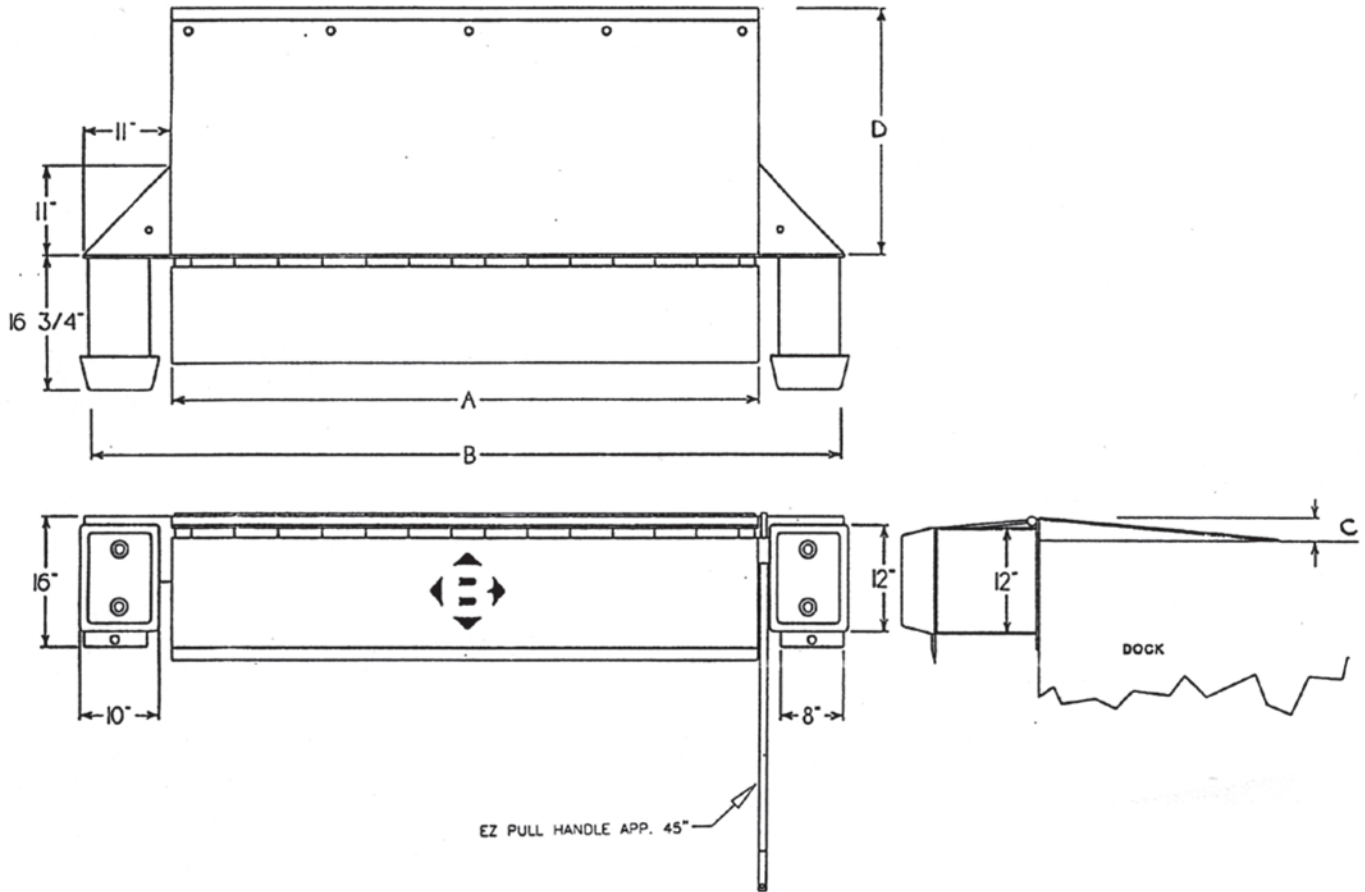
Now without expensive dock alterations, you can raise the height of your present dock as much as 11". Lo-dock levelers can easily be installed on any concrete dock without welding or modifications. Refrigerated lip is optional. Complete technical information and installation instructions are available upon request.

Bluff's edge-of-dock leveler is designed to have a working range of 5" above and 5" below dock.

Because of gradability problems, dock levelers are not recommended for use with pallet jacks or stackers.

Available in 20,000 lb. – 30,000 lb. capacities.
Hydraulic Assist available as option.

LO-DOCK LEVELERS MODEL LD



| MODEL # | A | B | C | D |
|------------------------|-----|------|-----|-----|
| 20LD72-3 25LD72-3 | 72" | 94" | 3" | 30" |
| 20LD72-5 25LD72-5 | 72" | 94" | 5" | 48" |
| 20LD72-7 25LD72-7 | 72" | 94" | 7" | 52" |
| 20LD72-9 25LD72-9 | 72" | 94" | 9" | 64" |
| 20LD72-11 25LD72-11 | 72" | 94" | 11" | 78" |
| 20LD78-3 25LD78-3 | 78" | 100" | 3" | 30" |
| 20LD78-5 25LD78-5 | 78" | 100" | 5" | 48" |
| 20LD78-7 25LD78-7 | 78" | 100" | 7" | 52" |
| 20LD78-9 25LD78-9 | 78" | 100" | 9" | 64" |