

CAT5E RJ45 MODULAR PLUG SHIELDED (FEED THROUGH STYLE)

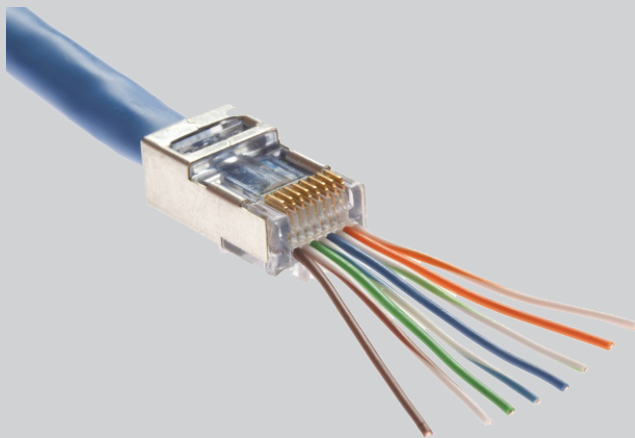
Cat5eCableGuy.Com

DESCRIPTION

Category 5E, RJ45 Shielded Modular Connector, Feed Through.

FEATURES

- Feed through design
- Fast and easy to terminate
- Easier sequence verification
- Gold plated terminal contact
- For solid and stranded cable
- Shielded for protection against EMI/RFI



SKU: 011-019/EZF-100

Electrical

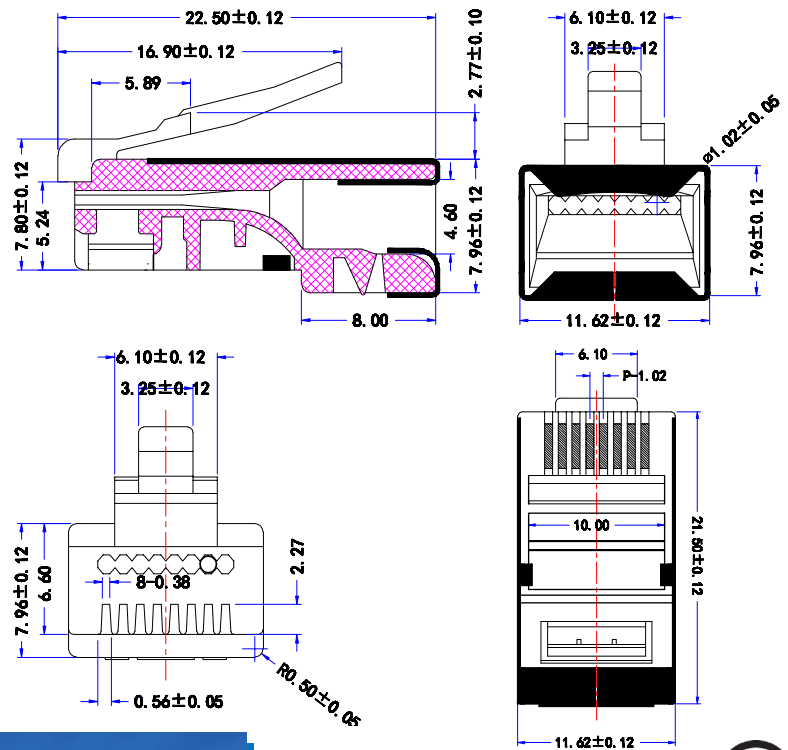
Voltage Rating	250 VAC RMS
Current Rating	2 Amps
Termination Resistance	35m Ω Max
Insulation Resistance	500m Ω

Mechanical

Cable to Plug Tensile Strength	20 lbs
Durability	500 Cycles Min.

Material

Housing	Polycarbonate UL94V-2
Shielded	Shield over housing
Contact Blade	Gold Plated (3 Prong)
Conductor Type	For Solid and Stranded Wire
Conductor Size	For 24AWG - 26AWG
Insulation Size	1.02mm max



Cat5eCableGuy.Com
Where Quality Cable is on Sale!.

