



HAYABUSA 1300 Undertail Installation instructions



Installation Instructions

1- Carefully remove the tail section body work.

Save all bolts, washers and plastic rivets for re-installation of tail.

2-Disconnect and remove the brake light (with all mounting grommets and washers), license plate and turn signals and move all wiring out of the cutting areas.

3-Remove the two bolts at the rear end of the stock fender (inside glove box) to allow the end to hang down for cutting

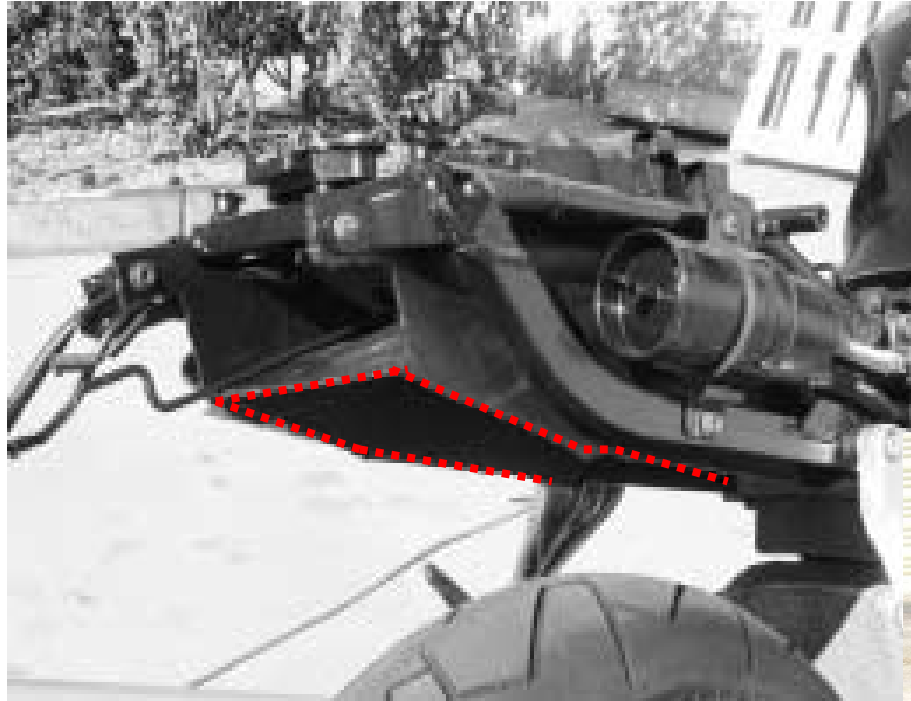


Using a “Dremel” tool or cutting disc, remove the plastic shown in the photos above



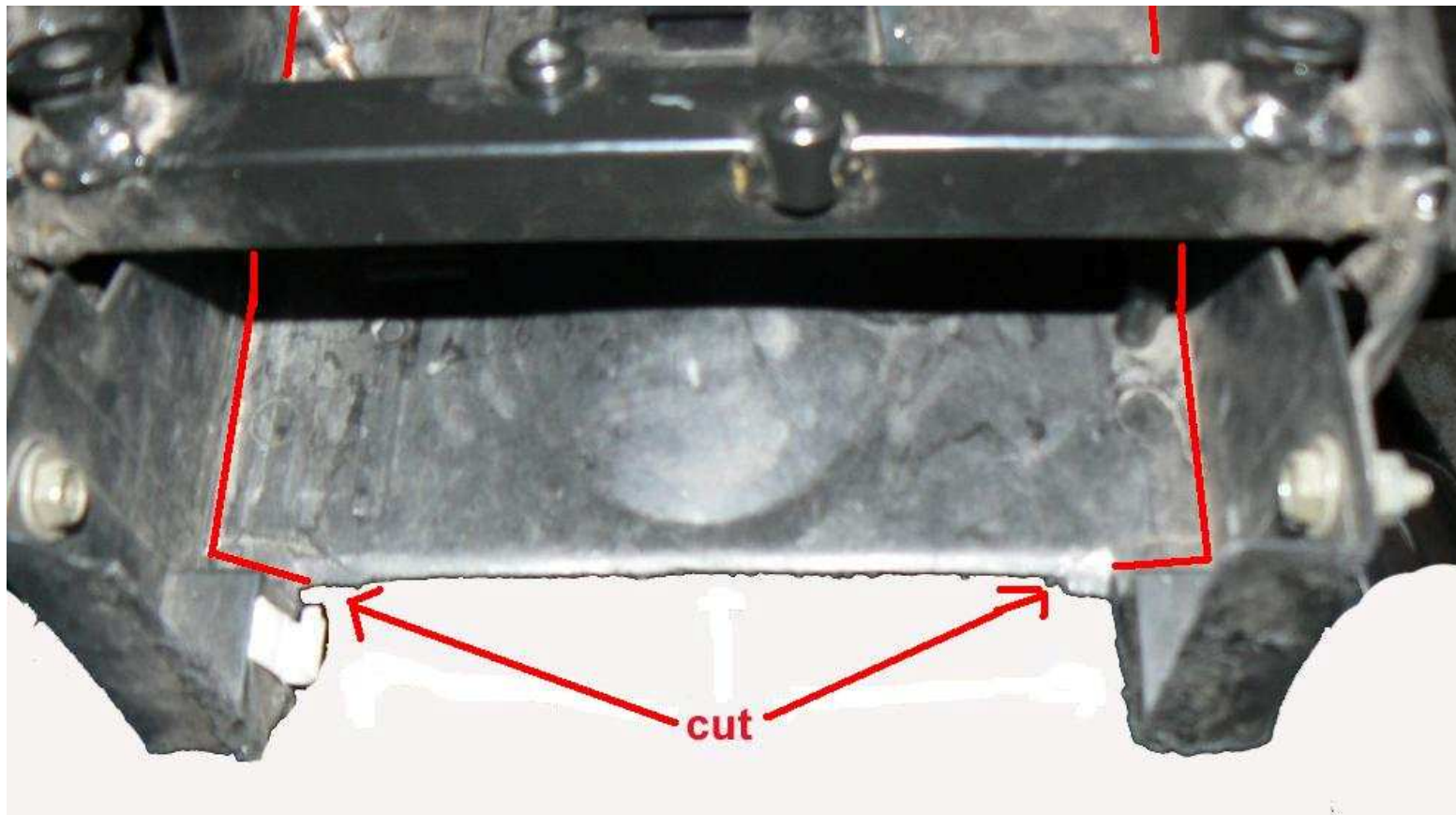


Cut along the red line as indicated in these pictures



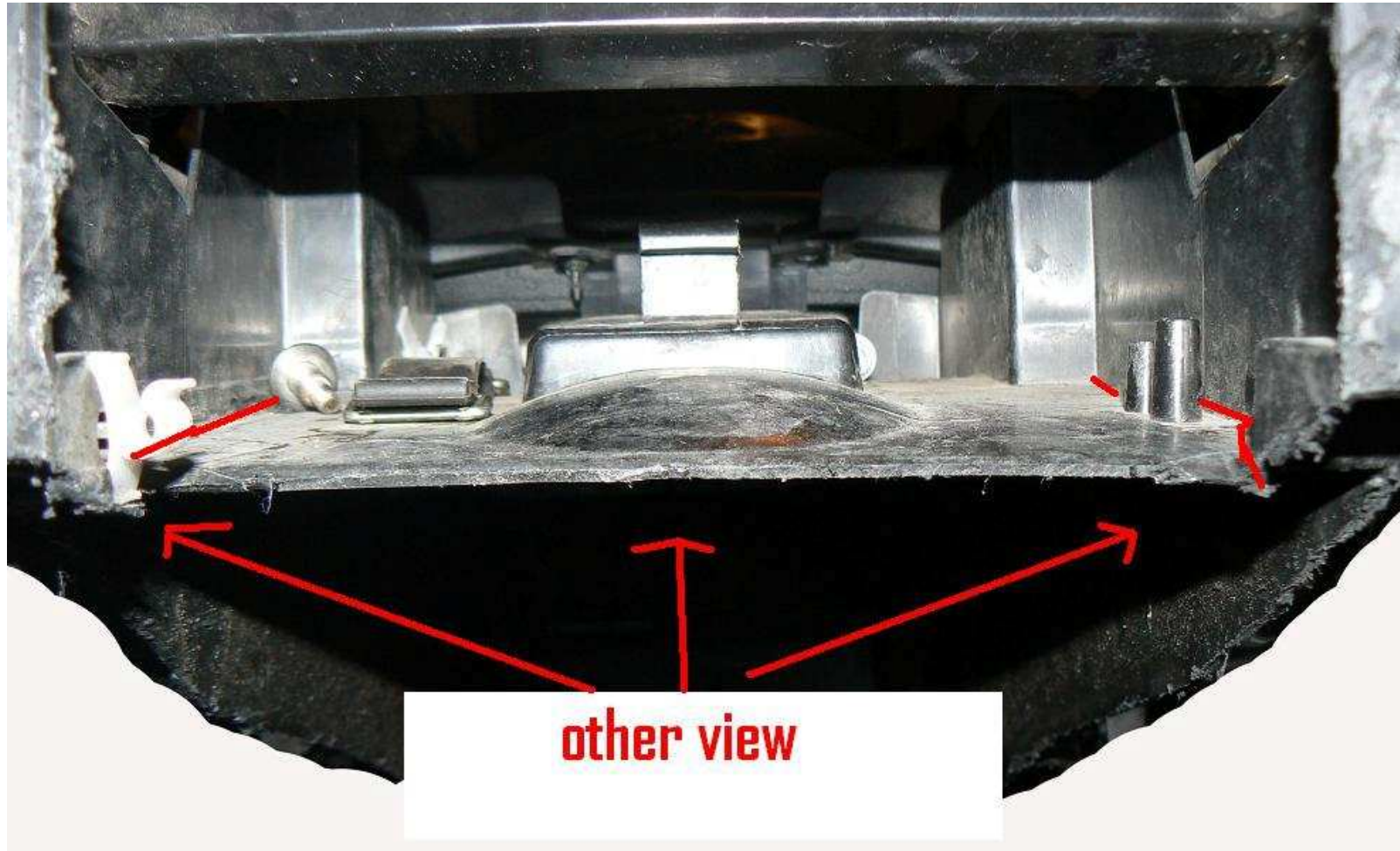


Area to be cut in detail – this will form a flap that will allow the undertail to go up



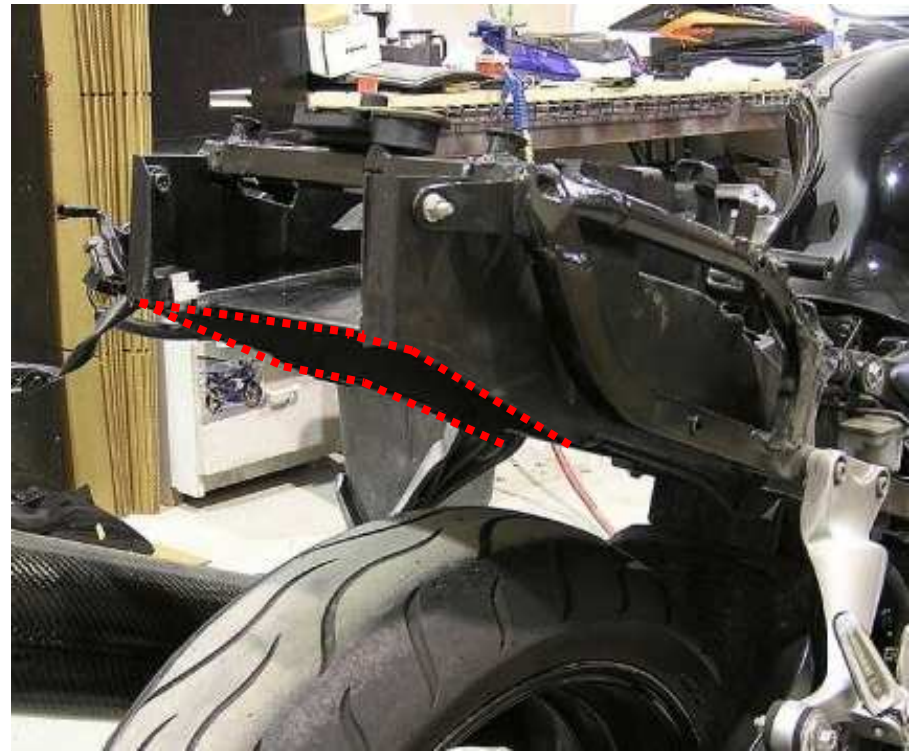


Area to be cut in detail – this will form a flap that will allow the undertail to go up





**You won't lose
your trunk space!**







Re-install tail section and driver seat. Do not fully tighten until the undertail is in place! Don't over tighten the bolts!

In our tests with HAYABUSA tail sections, we have noticed that not all align the same way. That is why we don't provide the undertail with predrilled holes.

Before drilling the holes, make sure to use masking tape to avoid any damages to the paint around it.

Start drilling one side first. Hold both the undertail and tail section with your hands (have a friend help).

Use a drill bit size 15/64 to drill the holes. Continue with the other side.



ASSEMBLING THE TAIL LIGHTS



Make a notch in the plastic with a pair of needle nose pliers, this will allow the stock brake light sockets to be easily removed for bulb replacement.



ASSEMBLING THE TAIL LIGHTS

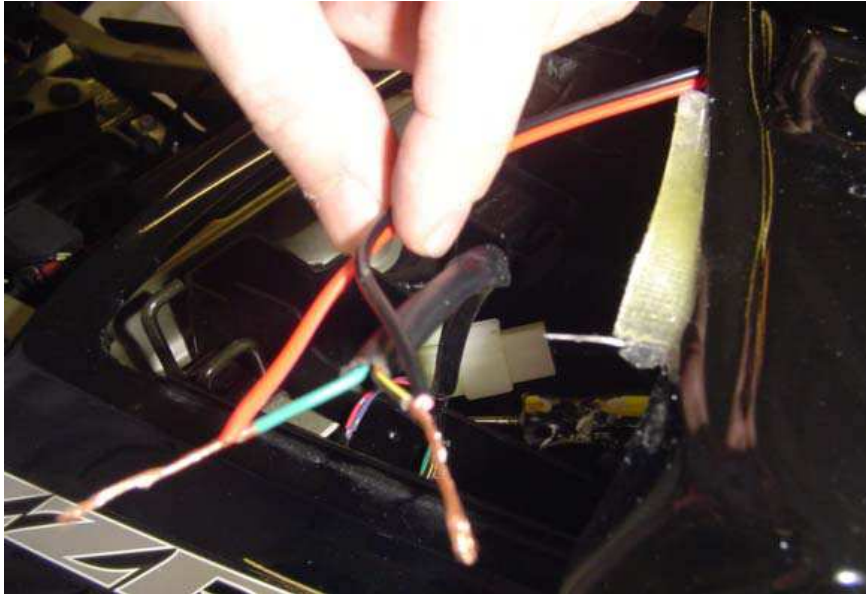
B- Plug in the sockets thru the base; place the washers and nuts and adjust them. It should look like this picture.

C- Don't tight them too hard.

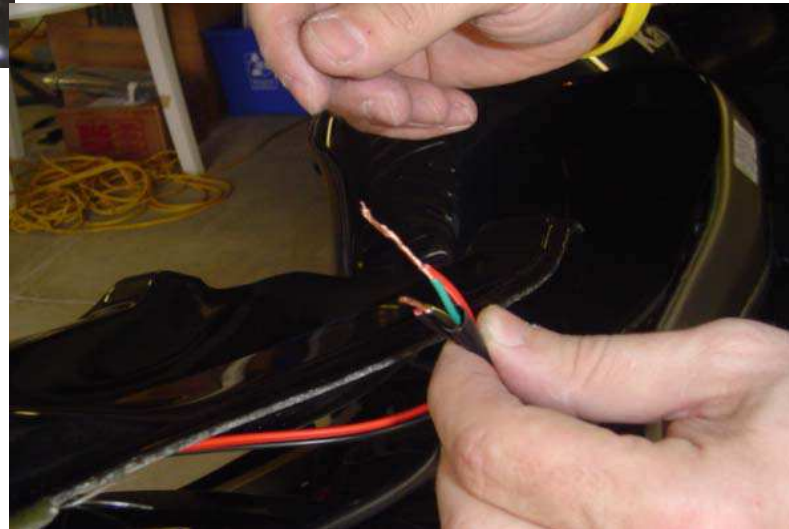




TESTING THE BLINKERS



Before installing the undertail make sure to test the blinkers as shown in the pictures





Connecting the blinkers (signals)

Splice your turn signal wires to the signals in the undertail.

Connect the right (light green wire) and left signal (black wire) wires on the bike, to the respective right/left orange wires on the undertail.

Connect the ground wires (black w/ white tracer) to the black wires on the undertail.

Connect the brake wires (white w/ black tracer) to the red wires on the undertail and connect the running light wires (brown) to the blue wires.



INSTALLING THE UNDERTAIL

**Install the undertail to the tail section using the 6
“plastic pop-rivets” in their stock locations.**

Tighten down all mounting hardware.

You are done!!